

STRYA EIGHT DEPARTURE (RNAV)

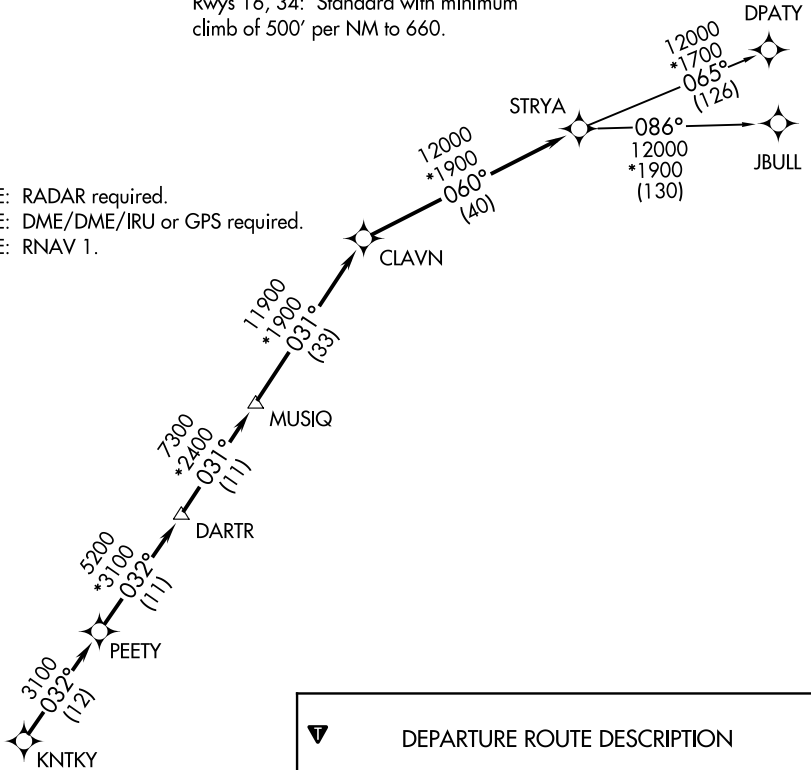
TOP ALTITUDE: ASSIGNED BY ATC

AWOS-3
119.325
CTAF
123.0
HOUSTON DEP CON
119.7 281.4

TAKEOFF MINIMUMS

Rwys 16, 34: Standard with minimum climb of 500' per NM to 660.

- NOTE: RADAR required.
- NOTE: DME/DME/IRU or GPS required.
- NOTE: RNAV 1.



DEPARTURE ROUTE DESCRIPTION

TAKEOFF RUNWAY 16: Climb on heading 157° to 1400 for RADAR vectors to KNTKY, then. . . .

TAKEOFF RUNWAY 34: Climb on heading 312° to 2000 for RADAR vectors to KNTKY, then. . . .

. . . .on track 032° to PEETY, then on track 032° to DARTR, then on track 031° to MUSIQ, then on track 031° to CLAVN, then on track 060° to STRYA, then on (transition). Maintain ATC assigned altitude. Expect filed altitude 10 minutes after departure.

DPATY TRANSITION (STRYA8.DPATY)

JBULL TRANSITION (STRYA8.JBULL)



NOTE: Chart not to scale.

SC-5, 20 FEB 2025 to 20 MAR 2025

SC-5, 20 FEB 2025 to 20 MAR 2025

STRYA EIGHT DEPARTURE (RNAV)

(STRYA8.STRYA) 07OCT21