

RNAV-1 DME/DME/IRU or GPS.

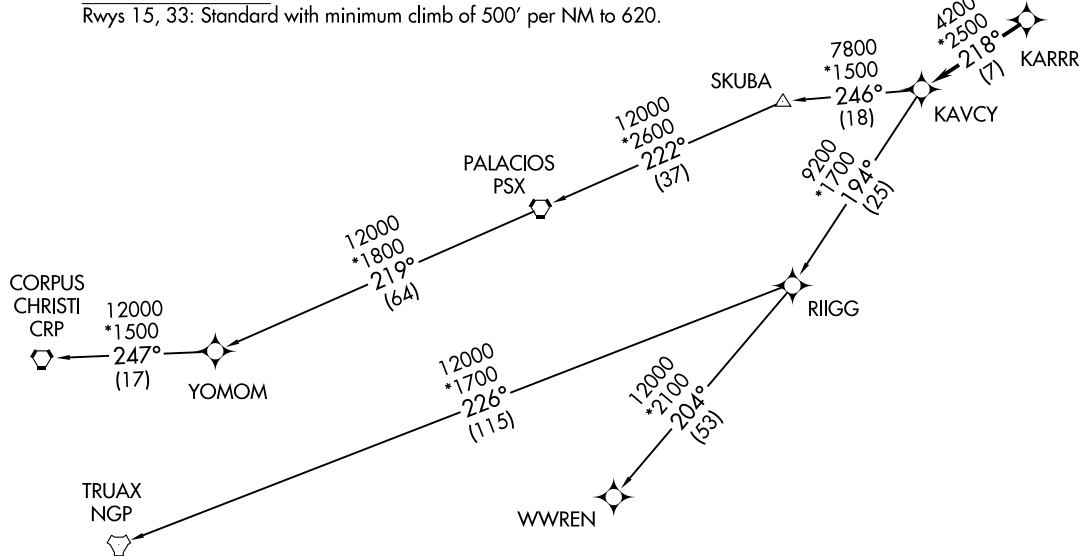
RADAR required.

TOP ALTITUDE:
ASSIGNED BY ATC

CTAF
123.05
CLNC DEL
121.15
HOUSTON DEP CON
123.8 257.7

TAKEOFF MINIMUMS

Rwys 15, 33: Standard with minimum climb of 500' per NM to 620.



(NARRATIVE ON FOLLOWING PAGE)

NOTE: Chart not to scale.

KARRR SEVEN DEPARTURE (RNAV)
(KARRR7.KARRR) 29DEC22

HOUSTON, TEXAS
WEST HOUSTON (IWS)

(KARRR7.KARRR) 22363
KARRR SEVEN DEPARTURE (RNAV)

AL-6079 (FAA)

WEST HOUSTON (IWS)
HOUSTON, TEXAS

KARRR SEVEN DEPARTURE(RNAV)



DEPARTURE ROUTE DESCRIPTION

TAKEOFF RUNWAY 15: Climb on heading 150° to 620, for RADAR vectors to KARRR, thence. . . .

TAKEOFF RUNWAY 33: Climb on heading 330° to 620, for RADAR vectors to KARRR, thence. . . .

. . . .on track 218° to KAVCY, then on (transition). Maintain ATC assigned altitude. Expect filed altitude 10 minutes after departure.

CORPUS CHRISTI TRANSITION (KARRR7.CRP)

PALACIOS TRANSITION (KARRR7.PSX)

TRUAX TRANSITION (KARRR7.NGP)

WWREN TRANSITION (KARRR7.WWREN)

YOMOM TRANSITION (KARRR7.YOMOM)

SC-5, 20 FEB 2025 to 20 MAR 2025

SC-5, 20 FEB 2025 to 20 MAR 2025