

# LUFKIN THREE DEPARTURE

CLNC DEL  
121.15  
CTAF  
123.05  
HOUSTON DEP CON  
123.8 257.7

**TOP ALTITUDE:  
ASSIGNED BY ATC**

LITTLE ROCK  
113.9 LIT  
Chan 86

NOTE: RADAR and DME required.  
NOTE: For aircraft destined LIT or  
overflying LIT or PXV.

LUFKIN  
112.1 LFK  
Chan 58

DAISETTA  
116.9 DAS  
Chan 116

HUMBLE  
116.6 IAH  
Chan 113

TAKEOFF MINIMUMS  
Rwys 15, 33: Standard.

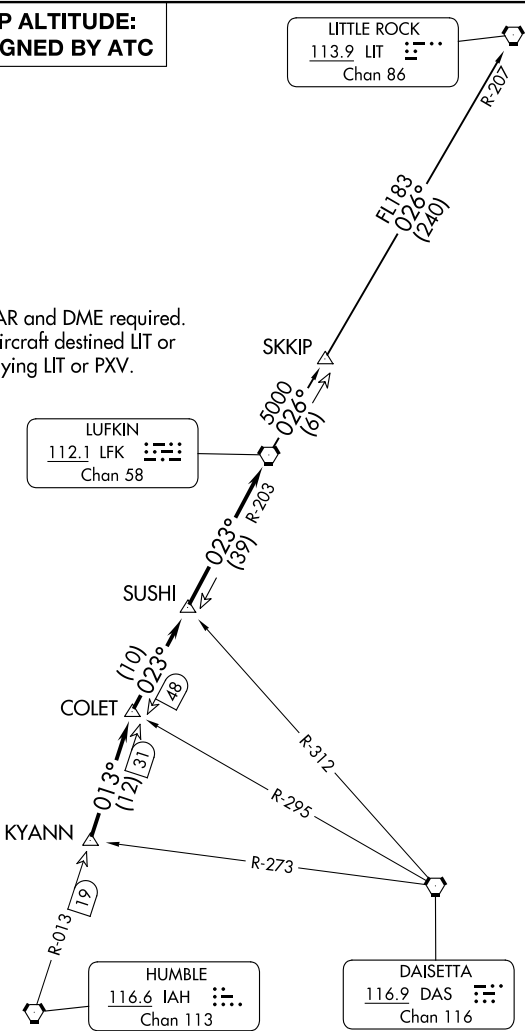
SC-5, 20 FEB 2025 to 20 MAR 2025

SC-5, 20 FEB 2025 to 20 MAR 2025

NOTE: Chart not to scale.

(CONTINUED ON FOLLOWING PAGE)

# LUFKIN THREE DEPARTURE



# LUFKIN THREE DEPARTURE



## DEPARTURE ROUTE DESCRIPTION

TAKEOFF ALL RUNWAYS: When entering controlled airspace, climb on assigned heading for RADAR vectors to KYANN INT. Maintain ATC assigned altitude. Expect filed altitude 10 minutes after departure, thence. . . .

. . . .on IAH R-013 to COLET INT, then right turn on LFK R-203 to LFK VORTAC.

LITTLE ROCK TRANSITION (LFK3.LIT): From over LFK VORTAC on LFK R-026 to SKKIP INT, then on LFK R-026 and LIT R-207 to LIT VORTAC.

SC-5, 20 FEB 2025 to 20 MAR 2025

SC-5, 20 FEB 2025 to 20 MAR 2025