

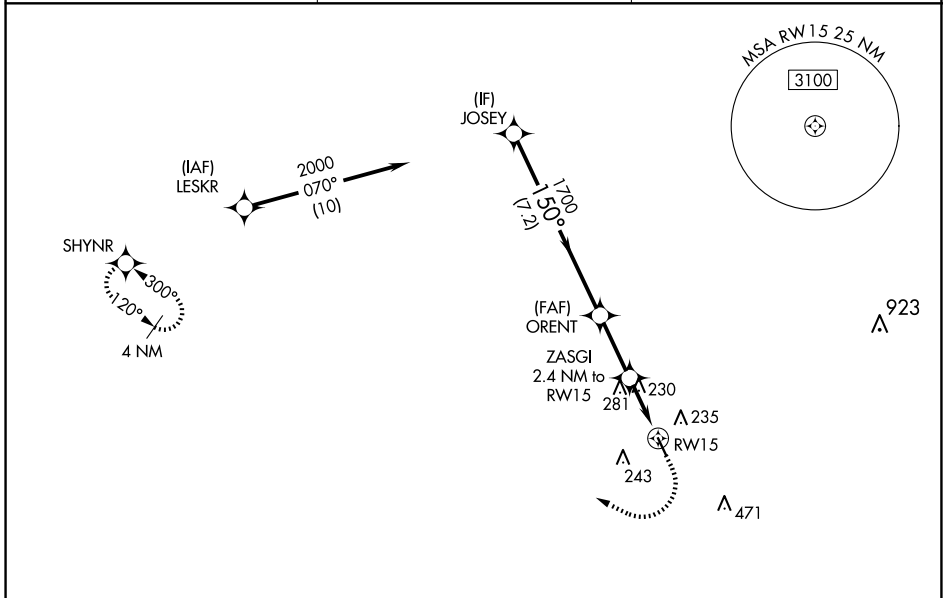
WAAS CH <b>40429</b> <b>W15A</b>	APP CRS <b>150°</b>	Rwy Idg TDZE <b>111</b> Apt Elev <b>111</b>	<b>3953</b>
--	------------------------	---	-------------

# RNAV (GPS) RWY 15

WEST HOUSTON (IWS)

RNP APCH.	MISSED APPROACH: Climb to 600 then climbing right turn to 2000 direct SHYNR and hold.
Procedure NA at night. Rwy 15 helicopter visibility reduction below 1 SM NA. Use George Bush Intcntl/Houston altimeter setting.	

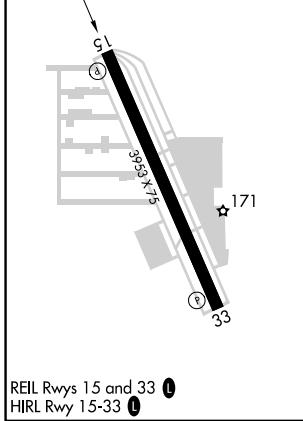
HOUSTON APP CON <b>123.8 257.7</b>	CLNC DEL <b>121.15</b>	UNICOM <b>123.05 (CTAF) 0</b>
---------------------------------------	---------------------------	----------------------------------



SC-5, 20 FEB 2025 to 20 MAR 2025

SC-5, 20 FEB 2025 to 20 MAR 2025

ELEV 111	TDZE 111
----------	----------



REIL Rwy 15 and 33  
HIRL Rwy 15-33

VGSIs and descent angles not coincident (VGSIs Angle 3.70/TCH 43).				600	2000	SHYNR
JOSEY	ORENT	ZASGI 2.4 NM to RWY 15	RWY 15			
2000	1700	900				
7.2 NM		2.5 NM	2.4 NM			
CATEGORY	A	B	C	D		
LP MDA	540-1	429 (500-1)	540-1¼ 429 (500-1¼)	NA		
LNAV MDA	580-1	469 (500-1)	580-1¾ 469 (500-1¾)	NA		
CIRCLING	600-1 489 (500-1)	640-1 529 (600-1)	800-2 689 (700-2)	NA		