

| | | | |
|--|------------------------|-----------------------------|---|
| WAAS CH 82435 W13A | APP CRS 128° | Rwy Idg TDZE Apt Elev | 6503 658 658 |
|--|------------------------|-----------------------------|---|

RNAV (GPS) RWY 13

NEW BRAUNFELS NTL (B.A.Z)

RNP APCH

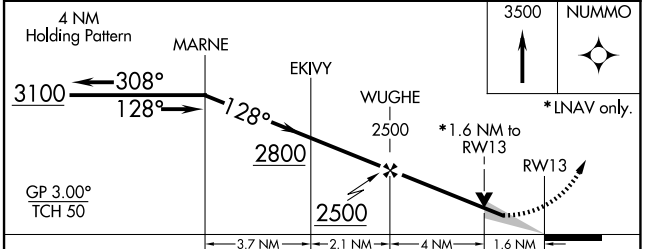
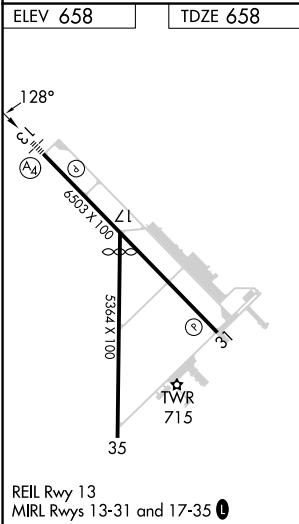
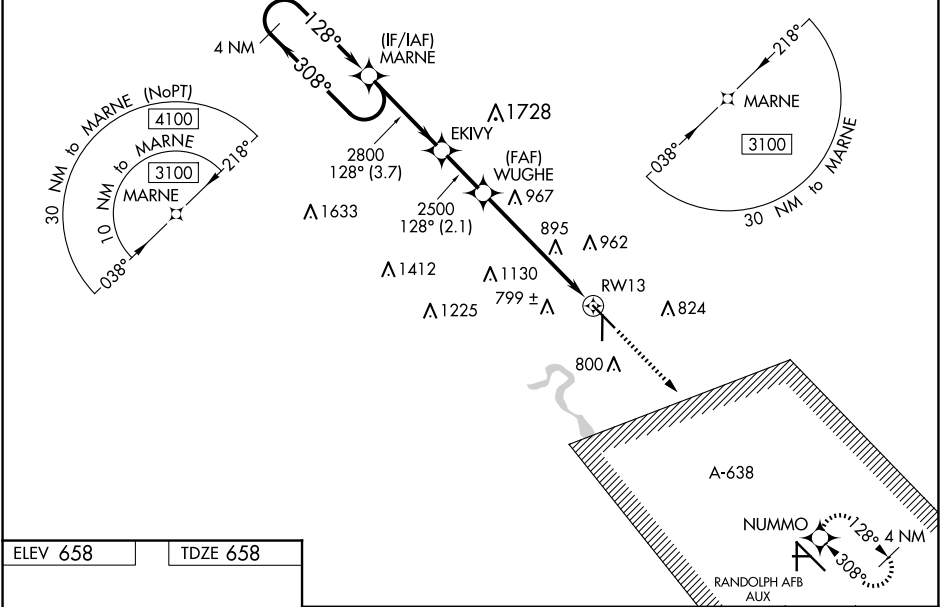
When local altimeter setting not received, use San Marcos Rgnl altimeter setting; increase LPV DA to 951 feet, LNAV/VNAV DA to 1169 feet; increase all MDAs 60 feet and visibility LNAV and Circling Cat C/D ¼ SM. For uncompensated Baro-VNAV systems, LNAV/VNAV NA below -6°C (22°F) or above 54°C (130°F). Baro-VNAV and VDP NA when using San Marcos altimeter setting. For inop ALS, increase LNAV/VNAV visibility to 1 ½ SM. Inop table does not apply to LPV all Cats and LNAV Cats A/B. For inop ALS when using San Marcos Rgnl altimeter setting, increase LPV all Cats visibility to ¾ SM and LNAV/VNAV all Cats visibility to 1 ¾ SM. When using San Marcos Rgnl altimeter setting, inop table does not apply to LNAV Cats A/B.

MALS



MISSED APPROACH:
Climb to 3500 direct NUMMO and hold, continue climb-in-hold to 3500.

| | | | | | | |
|------------------------|--|--|---------------------------|---------------------------|--|------------------------|
| ATIS 119.325 | SAN ANTONIO APP CON 124.45 335.625 | NEW BRAUNFELS TOWER* 127.05 (CTAF) 285.4 | GND CON 120.175 | CLNC DEL 134.75 | CLNC DEL 134.75 (When twr closed) | UNICOM 122.7 |
|------------------------|--|--|---------------------------|---------------------------|--|------------------------|



| CATEGORY | A | B | C | D |
|--|-----------------------|-----------------------|---------------------------|-----------------------|
| LPV DA | | 908-¾ | 250 (300-¾) | |
| LNAV/VNAV DA | | 1126-1¼ | 468 (500-1¼) | |
| LNAV MDA | 1220-1 | 562 (600-1) | 1220-1 ⅜ | 562 (600-1 ⅜) |
| <input checked="" type="checkbox"/> CIRCLING | 1220-1 562 (600-1) | 1240-1 582 (600-1) | 1280-1 ¾ 622 (700-1 ¾) | 1320-2 662 (700-2) |

SC-3, 20 FEB 2025 to 20 MAR 2025

SC-3, 20 FEB 2025 to 20 MAR 2025