

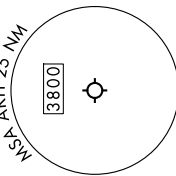
KILNS FIVE DEPARTURE (RNAV)

SE-2, 20 FEB 2025 to 20 MAR 2025

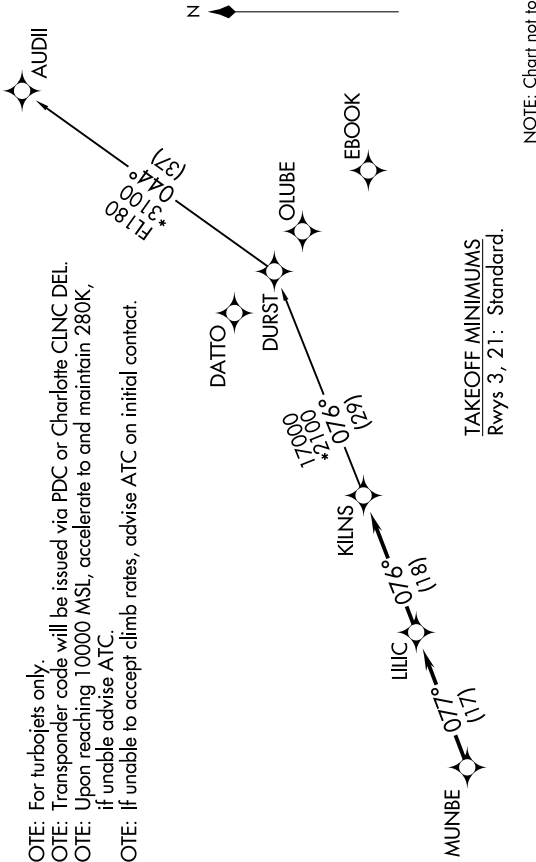
CHARLOTTE DEP CON
120.05 257.2
ASOS
135.725
CLNC DEL
127.2
UNICOM (CTAF)
123.0

RNAV 1 - DME/DME/IRU or GPS.
RADAR required.

NOTE: For turbopets only.
NOTE: Transponder code will be issued via PDC or Charlotte CLNC DEL.
NOTE: Upon reaching 10000 MSL, accelerate to and maintain 280K, if unable advise ATC.
NOTE: If unable to accept climb rates, advise ATC on initial contact.



TOP ALTITUDE:
3000



TAKEOFF MINIMUMS
Rwys 3, 21: Standard.

NOTE: Chart not to scale.

DEPARTURE ROUTE DESCRIPTION

TAKEOFF RUNWAY 3: Climb on heading 049° to 2700 before turning left, then on heading assigned by ATC, thence
TAKEOFF RUNWAY 21: Climb on heading 21.4° to 1600 before proceeding north, then on heading assigned by ATC, thence
. . . . on RADAR vectors to MUNBE, then on depicted route to KILNS, then on AUDII Transition. Maintain 3000. Expect clearance to filed altitude within 10 minutes after departure.

AUDII TRANSITION (KILNS5.AUDII)

SE-2, 20 FEB 2025 to 20 MAR 2025