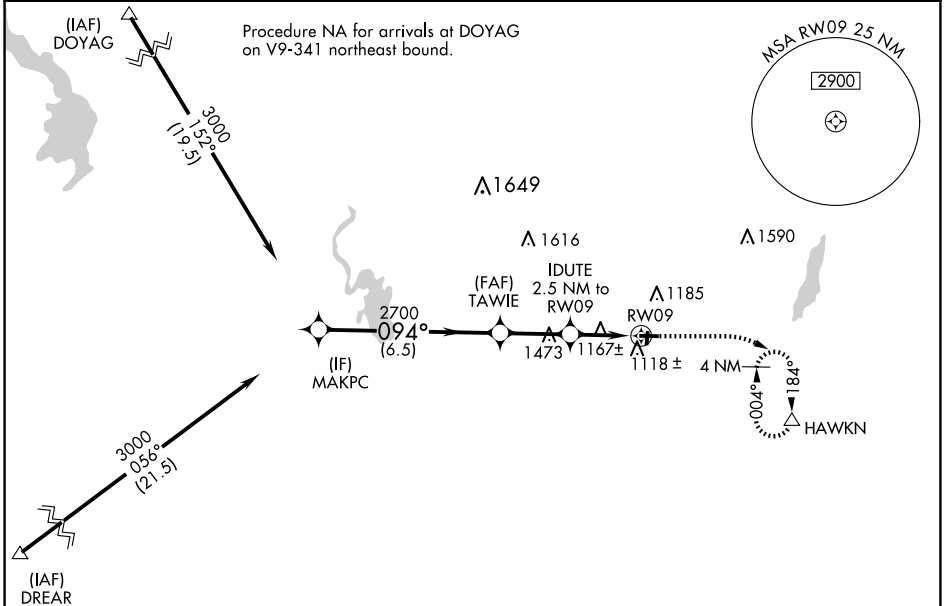


WAAS CH 42743 W09A	APP CRS 094°	Rwy Idg TDZE Apf Elev	3401 1068 1070
--	------------------------	-----------------------------	---

RNAV (GPS) RWY 9

HARTFORD MUNI (HXF)

RNP APCH.		MISSED APPROACH: Climb to 1700 then climbing right turn to 3000 direct HAWKN and hold, continue climb-in-hold to 3000.
▽ ▲ NA	Circling NA to Rwys 18 and 36. Baro-VNAV NA. Use Westbend altimeter setting.	
ETB AWOS-3 120.0	MILWAUKEE APP CON 125.35 307.0	UNICOM 123.0 (CTAF) 0



EC-3, 20 FEB 2025 to 20 MAR 2025

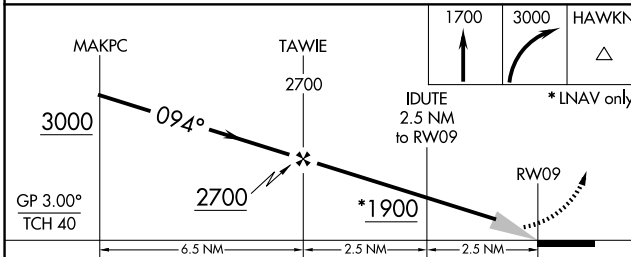
EC-3, 20 FEB 2025 to 20 MAR 2025

ELEV 1070	TDZE 1068
-----------	-----------

GP 3.00° TCH 40

Obstacle clearances:
 - 2231 X 1.6%
 - 3401 X 75
 - 36 X 1.5% UP

MIRL Rwy 9-27 0
 REIL Rws 9 and 27 0



CATEGORY	A	B	C	D
LPV DA	1372-7/8	304 (400-7/8)		NA
LNAV/VNAV DA	1372-7/8	304 (400-7/8)		NA
LNAV MDA	1480-1	412 (500-1)		NA
CIRCLING	1560-1	490 (500-1)		NA