


LOC I-DSY <b>110.1</b> Chan <b>38</b>	APP CRS <b>011°</b>	Rwy Idg TDZE <b>253</b> Apt Elev <b>265</b>
---	------------------------	---

# ILS or LOC RWY 1

SEARCY RGNL (SRC)

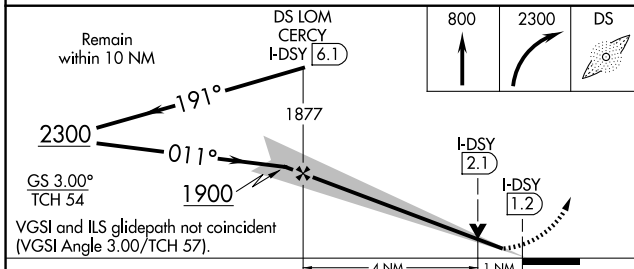
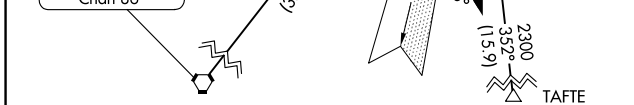
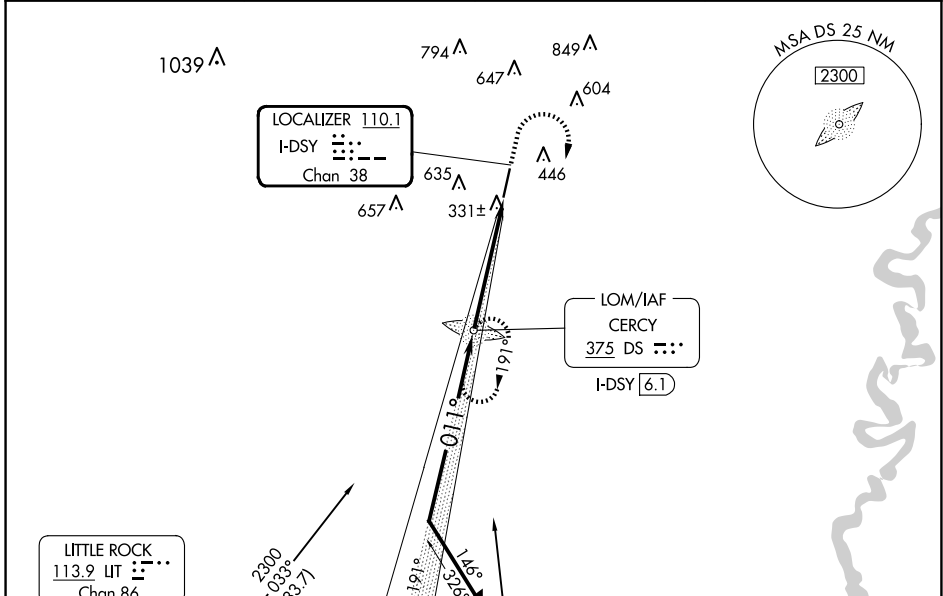
ADF required.

**⚠** Circling NA for Cats B and C west of Rwy 1-19. VDP NA when using Bill and Hillary Clinton Nil/Adams Fld altimeter setting. When local altimeter setting not received, use Bill and Hillary Clinton Nil/Adams Fld altimeter setting: increase ILS DA to 542 feet; increase all MDAs 100 feet and S-LOC 1 Cat C and Circling Cat C visibility ¼ SM. For inop ALS, increase S-LOC 1 Cat C visibility to 1 SM.

MALSR 

MISSED APPROACH: Climb to 800 then climbing right turn to 2300 direct CERCY LOM and hold, continue climb-in-hold to 2300.

AWOS-3PT <b>128.325</b>	LITTLE ROCK APP CON <b>119.75 291.775</b>	CLNC DEL <b>119.75</b>	UNICOM <b>122.7 (CTAF)</b>
----------------------------	--	---------------------------	-------------------------------



CATEGORY	A	B	C	D
S-ILS 1	453-1/2	200 (200-1/2)		NA
S-LOC 1	600-1/2	347 (400-1/2)	600-5/8 347 (400-5/8)	NA
CIRCLING	760-1	495 (500-1)	780-1 1/2 515 (600-1 1/2)	NA

ELEV 265	61	TDZE 253			
FAF to MAP 4.9 NM					
Knots	60	90	120	150	180
Min:Sec	4:54	3:16	2:27	1:58	1:38

SC-1, 20 FEB 2025 to 20 MAR 2025

SC-1, 20 FEB 2025 to 20 MAR 2025