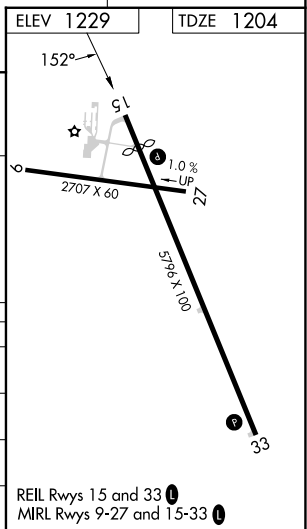
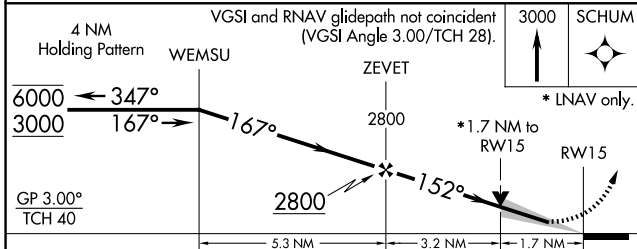
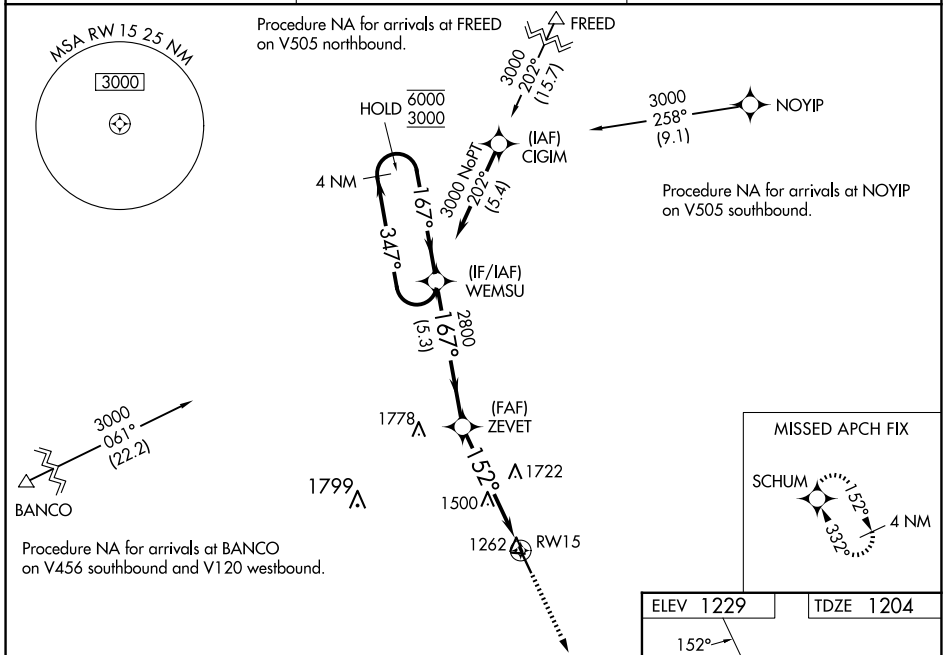


WAAS CH 90428 W15A	APP CRS 152°	Rwy Idg TDZE 1204 Apt Elev 1229
--	------------------------	---

RNAV (GPS) RWY 15

FOREST CITY MUNI/TRIMBLE FLD (FXY)

RNP APCH.		<p>MISSED APPROACH: Climb to 3000 direct to SCHUM and hold.</p>
<p>⚠ Circling to Rwy 9, 27 and 33 NA at night. For uncompensated Baro-VNAV systems, LNAV/VNAV NA below -29°C or above 54°C. When local altimeter setting not received, use Mason City altimeter setting and increase LPV DA to 1488 feet; LNAV/VNAV DA to 1516 feet; increase all MDA 40 feet. VDP and Baro-VNAV NA when using Mason City altimeter setting.</p>		
AWOS-3 123.925	MINNEAPOLIS CENTER 127.3 257.675	UNICOM 122.8 (CTAF) ①



CATEGORY	A	B	C	D
LPV DA		1454-1	250 (300-1)	
LNAV/VNAV DA		1482-1	278 (300-1)	
LNAV MDA	1760-1	556 (600-1)	1760-1 ³ / ₈	556 (600-1 ³ / ₈)
CIRCLING	1760-1	531 (600-1)	2040-2 ¹ / ₂ 811 (900-2 ¹ / ₂)	2040-2 ³ / ₄ 811 (900-2 ³ / ₄)

REIL Rws 15 and 33 ①
MRL Rws 9-27 and 15-33 ①

NC-3, 20 FEB 2025 to 20 MAR 2025

NC-3, 20 FEB 2025 to 20 MAR 2025