

VOR/DME MCW 114.9 Chan 96	APP CRS 297°	Rwy Idg TDZE Apt Elev N/A N/A 1229
---	------------------------	--

VOR-A

FOREST CITY MUNI/TRIMBLE FLD (FXY)

DME required.

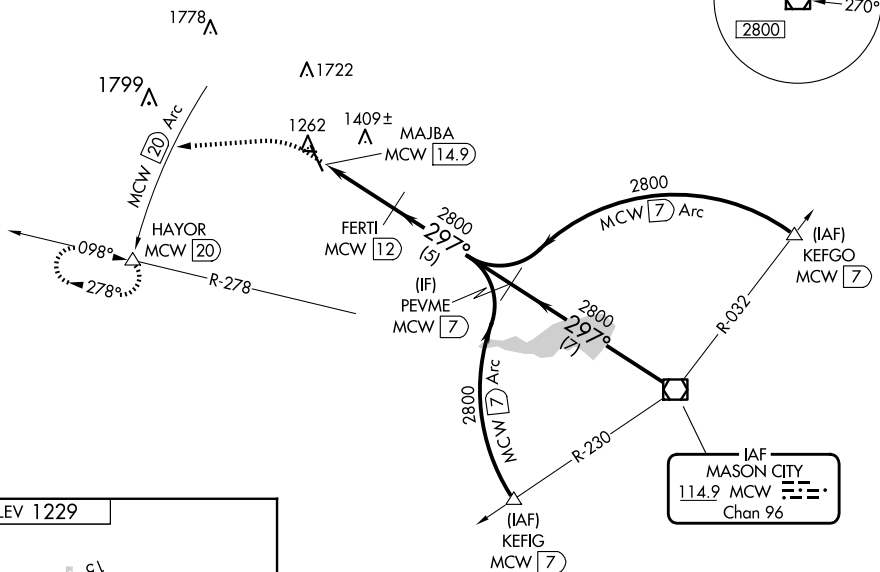
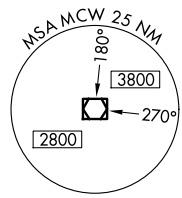
▼ When local altimeter setting not received use Mason City altimeter setting and increase all MDA 40 feet.
▲ Circling to Rwy 9, 27 33 NA at night.

MISSED APPROACH: Climb to 3000 on heading 260° to MCW 20 DME Arc and on MCW 20 DME Arc counterclockwise to HAYOR/20 DME and hold.

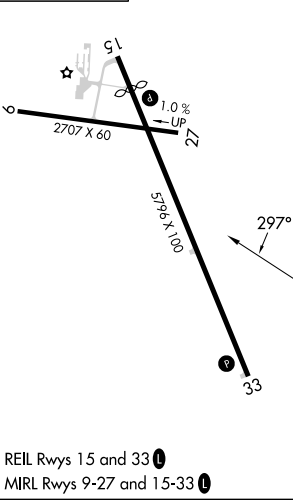
AWOS-3
123.925

MINNEAPOLIS CENTER
127.3 257.675

UNICOM
122.8 (CTAF) 1



ELEV 1229



REIL Rws 15 and 33 **1**
 MIRL Rws 9-27 and 15-33 **1**

Procedure NA for arrivals on MCW VOR/DME airway radials 278 CW 343.

3000 ↑ hdg 260°	MCW 20 Arc counterclockwise	HAYOR △	FERTI MCW 12	PEVME MCW 7	MCW VOR/DME
MAJBA MCW 14.9		2800 — 2800 — 297° — 2800			
← 2.9 NM		← 5 NM		← 7 NM	
CATEGORY	A	B	C	D	
C CIRCLING	1680-1 451 (500-1)	1760-1 531 (600-1)	NA		

NC-3, 20 FEB 2025 to 20 MAR 2025

NC-3, 20 FEB 2025 to 20 MAR 2025