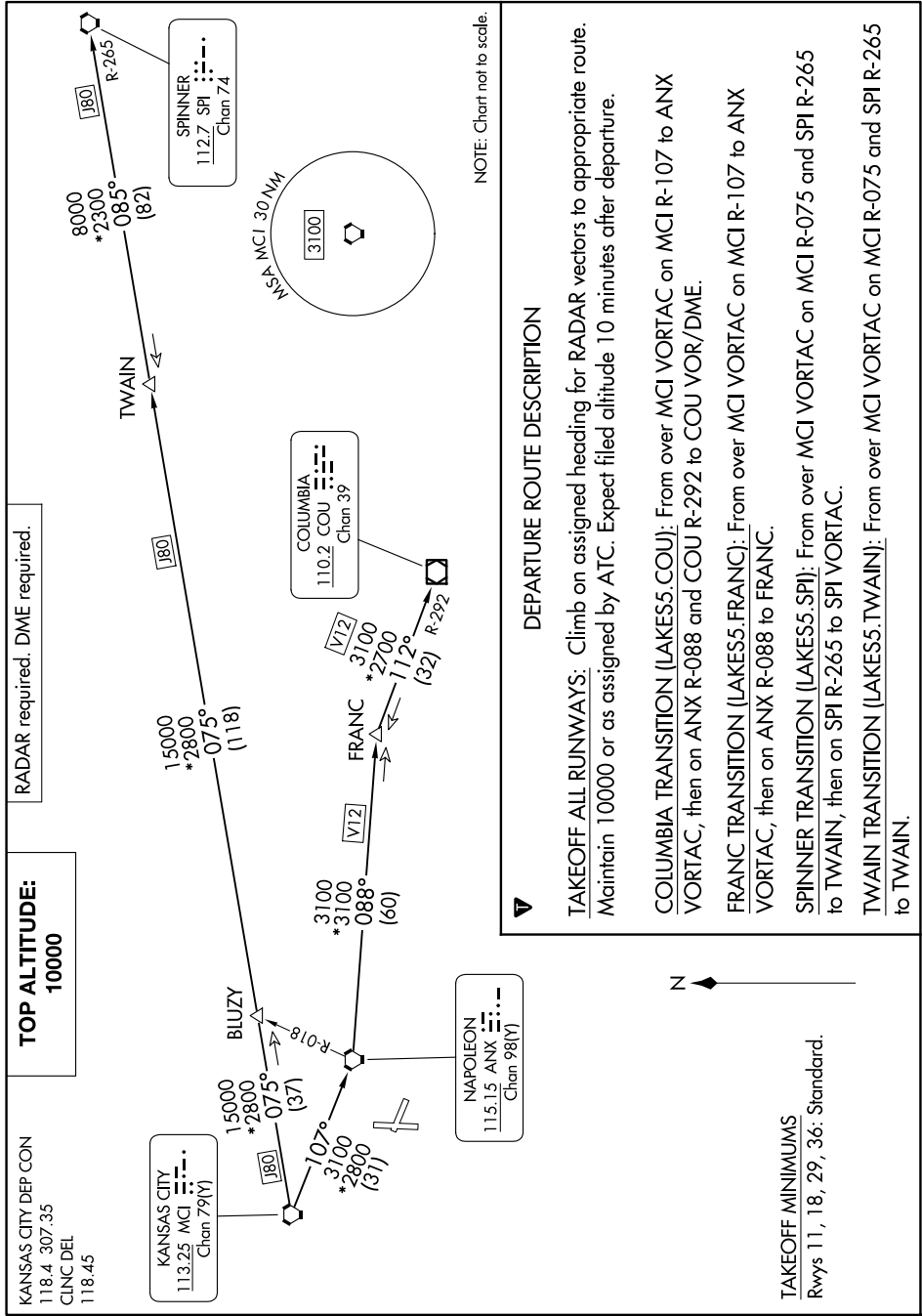


LAKES FIVE DEPARTURE

NC-3, 20 FEB 2025 to 20 MAR 2025



RADAR required. DME required.

TOP ALTITUDE:
10000

KANSAS CITY DEP CON
118.4 307.35
CINC DEL
118.45

KANSAS CITY
113.25 MCI
Chan 79(Y)

COLUMBIA
110.2 COU
Chan 39

NAPOLEON
115.15 ANX
Chan 98(Y)

TAKEOFF MINIMUMS
Rwys 11, 18, 29, 36: Standard.

NOTE: Chart not to scale.

DEPARTURE ROUTE DESCRIPTION

TAKEOFF ALL RUNWAYS: Climb on assigned heading for RADAR vectors to appropriate route. Maintain 10000 or as assigned by ATC. Expect filed altitude 10 minutes after departure.

COLUMBIA TRANSITION (LAKES5.COU): From over MCI VORTAC on MCI R-107 to ANX VORTAC, then on ANX R-088 and COU R-292 to COU VOR/DME.

FRANC TRANSITION (LAKES5.FRANC): From over MCI VORTAC on MCI R-107 to ANX VORTAC, then on ANX R-088 to FRANC.

SPINNER TRANSITION (LAKES5.SPI): From over MCI VORTAC on MCI R-075 and SPI R-265 to TWAIN, then on SPI R-265 to SPI VORTAC.

TWAIN TRANSITION (LAKES5.TWAIN): From over MCI VORTAC on MCI R-075 and SPI R-265 to TWAIN.

NC-3, 20 FEB 2025 to 20 MAR 2025

LAKES FIVE DEPARTURE