

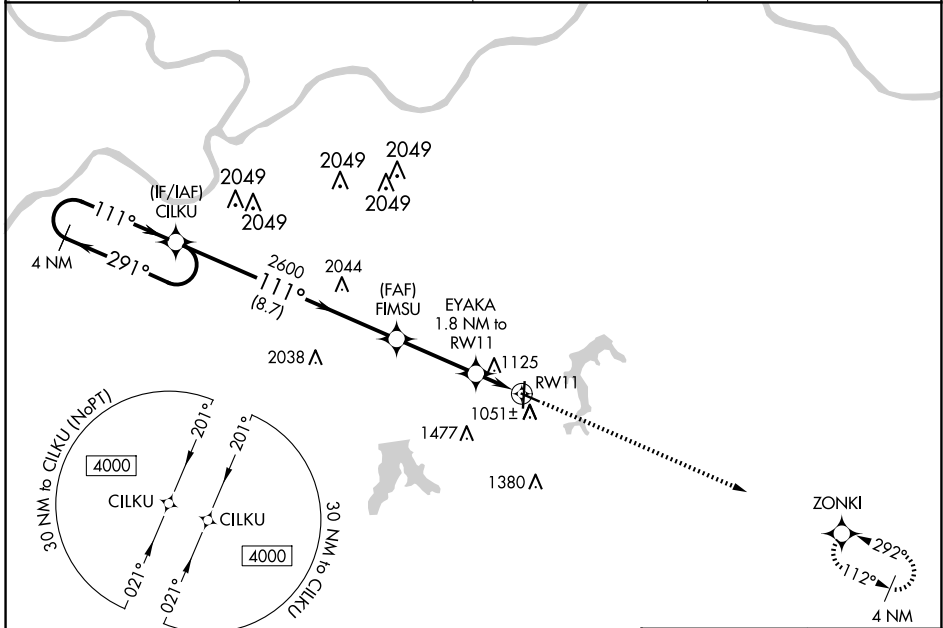
WAAAS CH 99405 W11A	APP CRS 111°	Rwy Idg 4000 TDZE 1004 Apt Elev 1004
---	------------------------	---

RNAV (GPS) RWY 11

KANSAS CITY/LEE'S SUMMIT RGNL (LX'T)

RNP APCH - GPS.		MISSED APPROACH: Climb to 3100 direct ZONKI and hold.
<p>▼ For uncompensated Baro-VNAV systems, LNAV/VNAV NA below -17°C or above 54°C. Rwy 11 helicopter visibility reduction below ¾ SM NA.</p>		

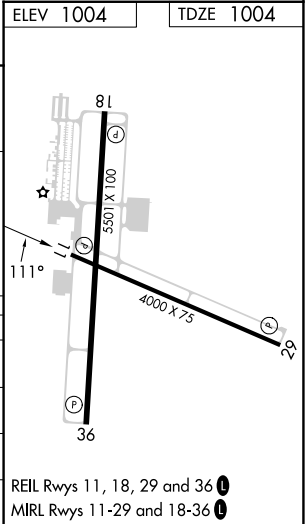
ASOS 124.175	KANSAS CITY APP CON 118.4 307.35	CLNC DEL 118.45	UNICOM 122.8 (CTAF) 1
------------------------	--	---------------------------	--



NC-3, 20 FEB 2025 to 20 MAR 2025

NC-3, 20 FEB 2025 to 20 MAR 2025

<p>4 NM Holding Pattern</p> <p>4000 ← 291° → 111° → 711° → 2600 → 1600 → RW11</p> <p>GP 3.00° TCH 45</p>		<p>3100 ZONKI</p> <p>↑</p>		
CATEGORY	A	B	C	D
LPV DA		1254-1	250 (300-1)	
LNAV/VNAV DA		1381-1¼	377 (400-1¼)	
LNAV MDA		1380-1	376 (400-1)	
CIRCLING	1440-1 436 (500-1)	1540-1 536 (600-1)	1780-2¼ 776 (800-2¼)	1780-2½ 776 (800-2½)



REIL Rws 11, 18, 29 and 36 **1**
MIRL Rws 11-29 and 18-36 **1**