

WAAS CH 48905 W29A	APP CRS 291°	Rwy Idg TDZE Apt Elev	4000 1004 1004
--	------------------------	-----------------------------	---

RNAV (GPS) RWY 29

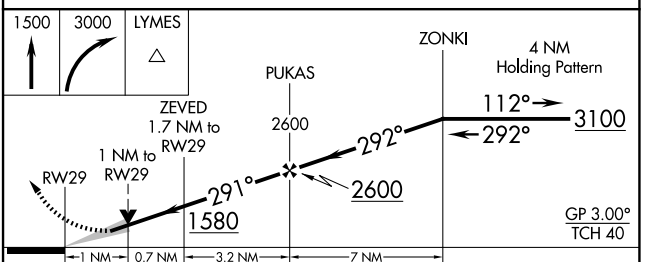
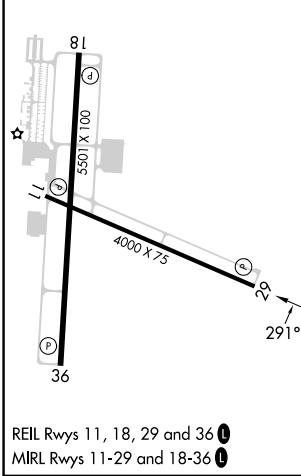
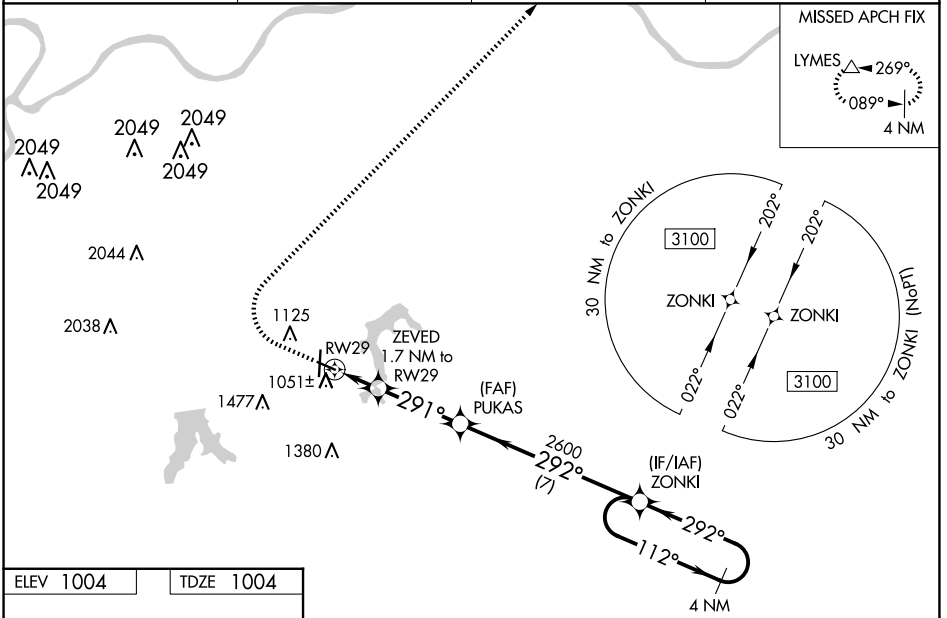
KANSAS CITY/LEE'S SUMMIT RGNL (LXT)

RNP APCH - GPS.

▼
▲ For uncompensated Baro-VNAV systems, LNAV/VNAV NA below -17°C or above 54°C. VDP and Baro-VNAV NA when using Charles B. Wheeler Downtown altimeter setting. When local altimeter setting not received, use Charles B. Wheeler Downtown altimeter setting: increase LPV DA to 1322 feet; increase LNAV/VNAV DA to 1359 feet; increase all MDA 80 feet and visibility Cats C and D ½ SM.

MISSED APPROACH: Climb to 1500 then climbing right turn to 3000 direct LYMES and hold.

ASOS 124.175	KANSAS CITY APP CON 118.4 307.35	CLNC DEL 118.45	UNICOM 122.8 (CTAF) 0
------------------------	--	---------------------------	---------------------------------



CATEGORY	A	B	C	D
LPV DA		1254-1	250 (300-1)	
LNAV/VNAV DA		1291-1	287 (300-1)	
LNAV MDA		1360-1	356 (400-1)	
<input checked="" type="checkbox"/> CIRCLING	1440-1 436 (500-1)	1540-1 536 (600-1)	1780-2¼ 776 (800-2¼)	1780-2½ 776 (800-2½)

NC-3, 20 FEB 2025 to 20 MAR 2025

NC-3, 20 FEB 2025 to 20 MAR 2025