

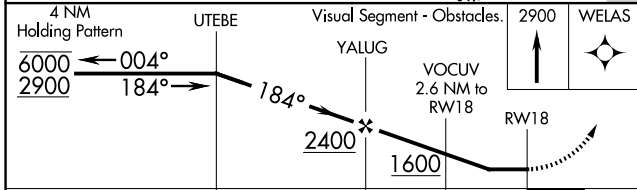
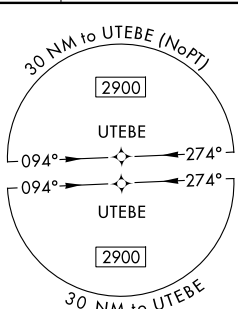
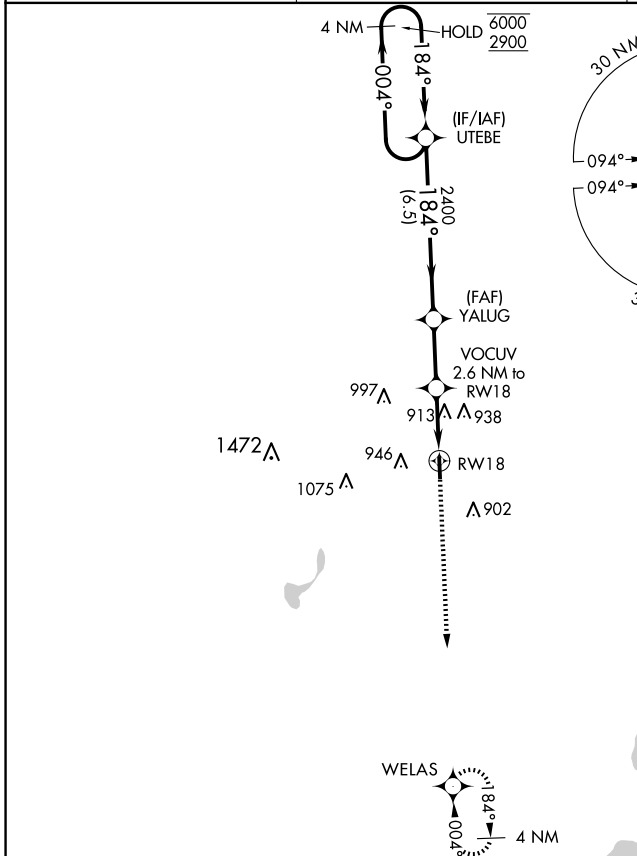
APP CRS	Rwy Idg	3534
184°	TDZE	739
	Apt Elev	739

RNAV (GPS) RWY 18

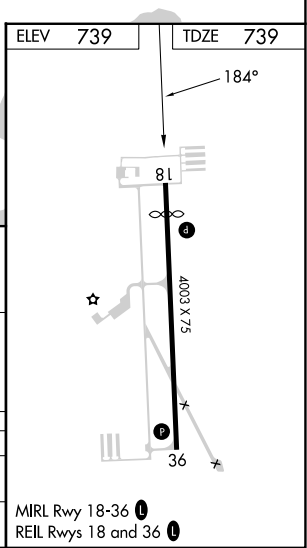
ROMEO STATE (D98)

RNP APCH - GPS.		MISSED APPROACH: Climb to 2900 direct WELAS and hold.
<p>▼ Rwy 18 helicopter visibility reduction below 1 SM NA. Use Coleman A Young Muni altimeter setting. Straight-in and Circling Rwy 18 NA at night.</p> <p>▲ NA</p>		

DET ASOS 124.875	SELFRIDGE APP CON★ 119.6 391.9	UNICOM 122.8 (CTAF) 0
----------------------------	--	---------------------------------



CATEGORY	A	B	C	D
INAV MDA	1240-1	501 (600-1)	1240-1 ³ / ₈	501 (600-1 ³ / ₈)
CIRCLING	1300-1 561 (600-1)	1420-1 681 (700-1)	1420-2 681 (700-2)	1480-2 ¹ / ₂ 741 (800-2 ¹ / ₂)



EC-1, 20 FEB 2025 to 20 MAR 2025

EC-1, 20 FEB 2025 to 20 MAR 2025