

(SLENA1.SLENA) 24025

AL-6114 (FAA)

PLEASANTON MUNI (PEZ)  
PLEASANTON, TEXAS

# SLENA ONE DEPARTURE (RNAV)

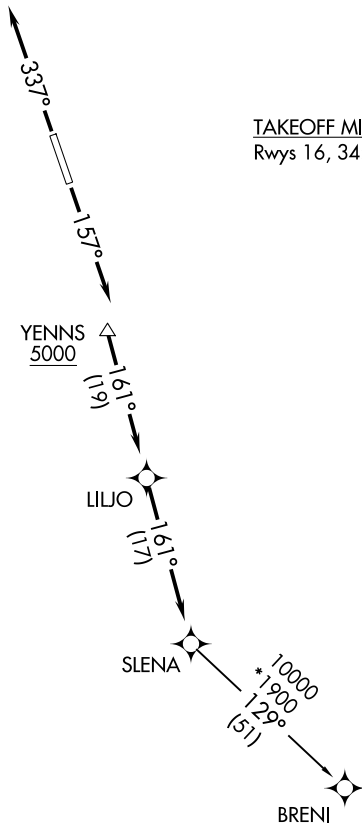
SAN ANTONIO DEP CON  
125.7 290.225  
CLNC DEL  
121.375

RNAV 1 - DME/DME IRU or GPS.

RADAR required.

**TOP ALTITUDE:  
ASSIGNED BY ATC**

TAKEOFF MINIMUMS  
Rwys 16, 34: Standard.



NOTE: Chart not to scale.



## DEPARTURE ROUTE DESCRIPTION

TAKEOFF RUNWAY 16: Climb on heading 157° or as assigned by ATC, for vectors to YENNS, thence . . . .

TAKEOFF RUNWAY 34: Climb on heading 337° or as assigned by ATC, for vectors to YENNS, thence . . . .

. . . . on track 161° to LILJO, then on track 161° to SLENA, then on transition.  
Maintain ATC assigned altitude.

BRENI TRANSITION (SLENA1.BRENI)

**SLENA ONE DEPARTURE (RNAV)**  
(SLENA1.SLENA) 25JAN24

PLEASANTON, TEXAS  
PLEASANTON MUNI (PEZ)

SC-3, 20 FEB 2025 to 20 MAR 2025

SC-3, 20 FEB 2025 to 20 MAR 2025