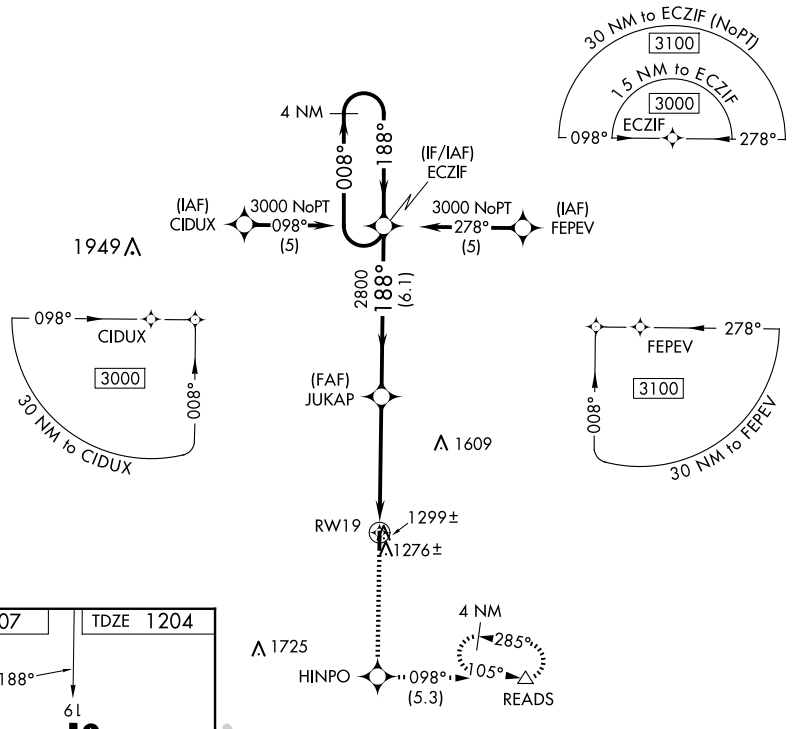


APP CRS	Rwy Idg	3501
188°	TDZE	1204
	Apt Elev	1207

RNAV (GPS) RWY 19

ASHLAND COUNTY (3G4)

RNP APCH.		MISSED APPROACH: Climb to 3000 direct HINPO and left turn on track 098° to READS and hold.
▼ ▲ NA	Rwy 19 helicopter visibility reduction below 1 SM NA. Procedure NA at night. Use Mansfield altimeter setting, when not received use Wooster altimeter setting.	
MFD ASOS 125.3	CLEVELAND APP CON ★ 128.35 360.65	UNICOM 122.7 (CTAF) ①



ELEV 1207	TDZE 1204
-----------	-----------

Profile view diagram showing vertical profile, altitudes, and descent rates:

- Altitude 61 at 188° track.
- Descent rate of 0.5% UP.
- Vertical scale 3501 X 7.5.
- Altitude 1207 and 1204 marked.

REIL Rws 1 and 19 ①
MIRL Rwy 1-19 ①

3000	HINPO	READS	VGSI and descent angles not coincident (VGSI Angle 3.00/TCH 20).	4 NM Holding Pattern
↑	◆	↪ tr 098°	△	
<p>JUKAP: 2800, 3.04° TCH 40, 4.9 NM to RWY 19.</p> <p>ECZIF: 3000, 188° track, 6.1 NM to RWY 19.</p>				
CATEGORY	A	B	C	D
LNAV MDA	1600-1	396 (400-1)	1600-1 ¹ / ₈ 396 (400-1 ¹ / ₈)	NA
CIRCLING	1660-1	453 (500-1)	1740-1 ¹ / ₂ 533 (600-1 ¹ / ₂)	NA

EC-2, 20 FEB 2025 to 20 MAR 2025

EC-2, 20 FEB 2025 to 20 MAR 2025