

WAAS CH <b>45915</b> <b>W09A</b>	APP CRS <b>094°</b>	Rwy Idg <b>5502</b> TDZE <b>141</b> Apt Elev <b>141</b>
--	------------------------	---

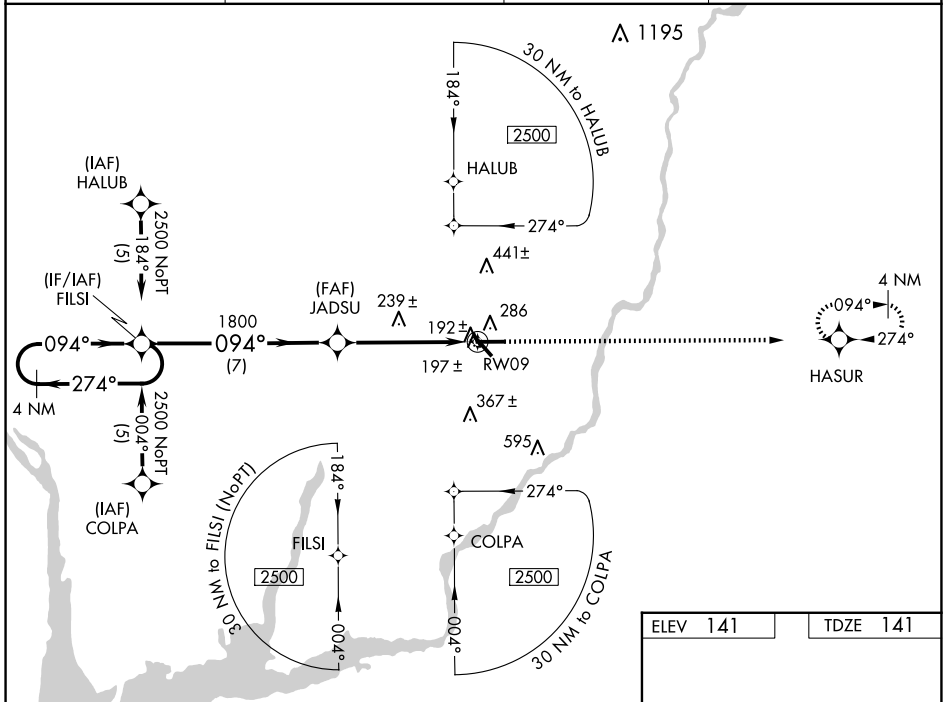
# RNAV (GPS) RWY 9

DECATUR COUNTY INDUSTRIAL AIR PARK (BGE)

**⚠** For uncompensated Baro-VNAV systems, LNAV/VNAV NA below -15°C (5°F) or above 48°C (118°F).  
**⚠** DME/DME RNP-0.3 NA. Visibility reduction by helicopters NA. VDP and Baro-VNAV NA when using Tallahassee Intl altimeter setting. When local altimeter setting not received, use Tallahassee Intl altimeter setting and increase LPV DA to 522 feet and LNAV/VNAV DA to 562 feet; increase all MDAs 100 feet and increase LPV DA to 522 feet and LNAV/VNAV all Cats and LNAV Cat C, D visibility 1/4 SM and Circling Cat C, D visibility 1/2 SM.

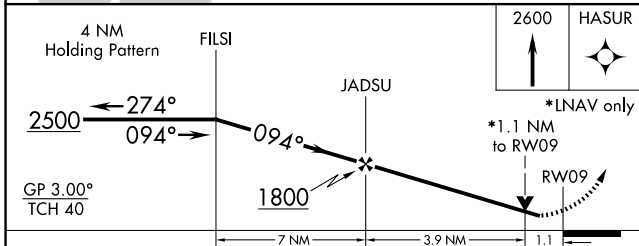
**MISSED APPROACH:**  
Climb to 2600 direct HASUR and hold.

AWOS-3PT <b>121.125</b>	TALLAHASSEE APP CON★ <b>128.7 254.3</b>	CLNC DEL <b>124.775 335.65</b>	UNICOM <b>122.975</b> (CTAF)
----------------------------	--	-----------------------------------	---------------------------------

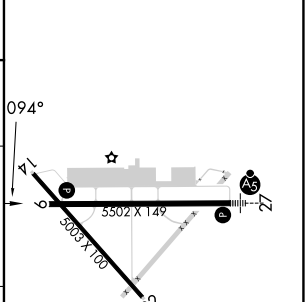


SE-4, 20 FEB 2025 to 20 MAR 2025

SE-4, 20 FEB 2025 to 20 MAR 2025



ELEV 141	TDZE 141
----------	----------



CATEGORY	A	B	C	D
LPV DA		427-1	286 (300-1)	
LNAV/VNAV DA		467-1¼	326 (400-1¼)	
LNAV MDA	540-1	399 (400-1)		540-1¼ 399 (400-1¼)
CIRCLING	600-1	459 (500-1)	800-1¾ 659 (700-1¾)	860-2¼ 719 (800-2¼)

HIRL Rwy 9-27