

# RNAV (GPS) Y RWY 23

NORTH VERNON (OVO)

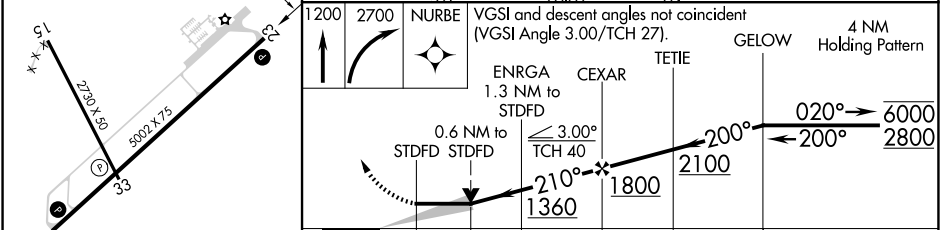
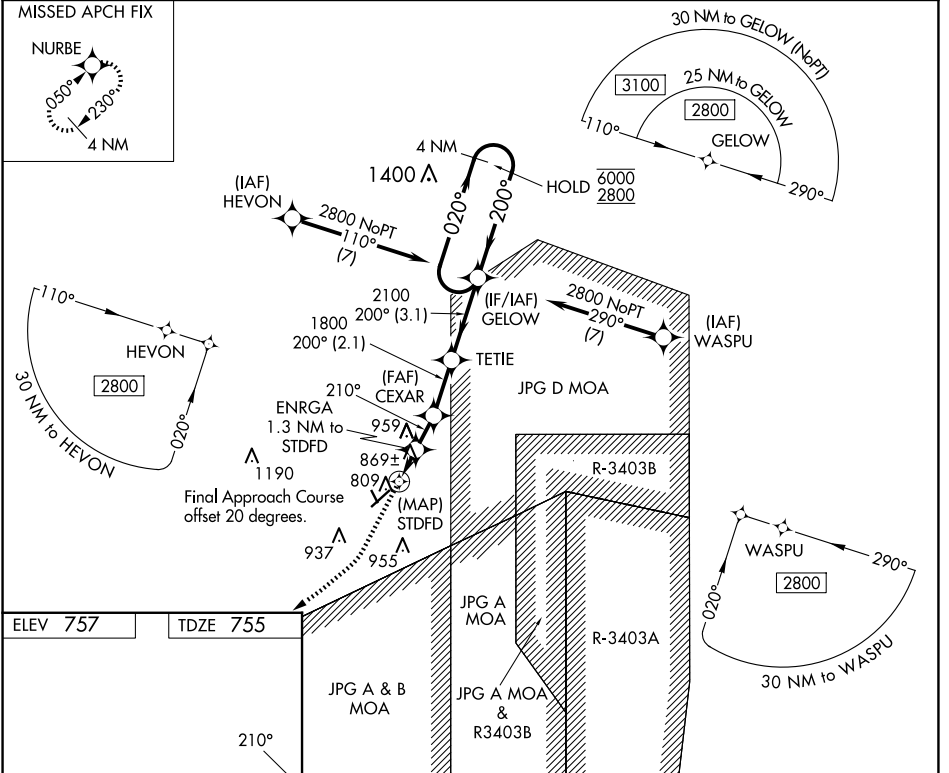
APP CRS	Rwy Idg	<b>5002</b>
<b>210°</b>	TDZE	<b>755</b>
	Apt Elev	<b>757</b>

RNP APCH - GPS.

**NA** Circling to Rwy 15, 33 NA at night. When local altimeter setting not received, use Shelbyville altimeter setting and increase all MDAs 100 feet, and LNAV visibility Cat C ¾ SM, and Circling visibility Cat C ¼ SM. VDP NA when using Shelbyville Muni altimeter setting.

**MISSED APPROACH:** Climb to 1200 then climbing right turn to 2700 direct NURBE and hold.

AWOS-3 <b>120.625</b>	INDIANAPOLIS APP CON <b>134.85 317.8</b>	UNICOM <b>122.7 (CTAF)</b>
--------------------------	---	-------------------------------



ELEV 757	TDZE 755	VGSI and descent angles not coincident (VGSI Angle 3.00/TCH 27).			
		NURBE	GELOW	4 NM Holding Pattern	
		ENRGA 1.3 NM to STD FLD	CEXAR	TETIE	GELOW
		0.6 NM to STD FLD	≤ 3.00° TCH 40	1800	6000 / 2800
		0.5	0.6	0.7	1.4 NM
		2.1 NM		3.1 NM	
CATEGORY	A	B	C	D	
LNAV MDA	1120-1 365 (400-1)			NA	
CIRCLING	1180-1 423 (500-1)	1300-1 543 (600-1)	1300-1½ 543 (600-1½)	NA	

EC-2, 20 FEB 2025 to 20 MAR 2025

EC-2, 20 FEB 2025 to 20 MAR 2025