

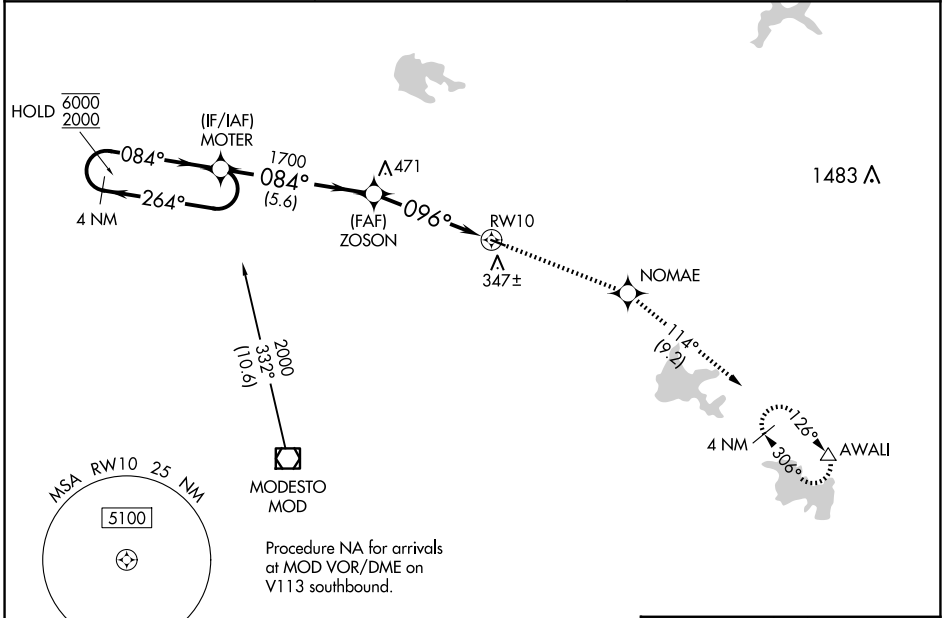
WAAS CH <b>42524</b> <b>W10A</b>	APP CRS <b>096°</b>	Rwy Idg TDZE Apt Elev	<b>3013</b> <b>236</b> <b>237</b>
--	------------------------	-----------------------------	---

# RNAV (GPS) RWY 10

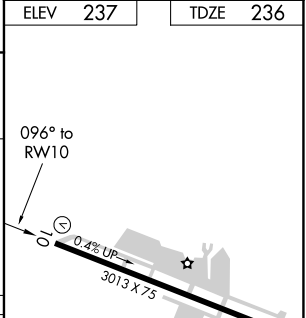
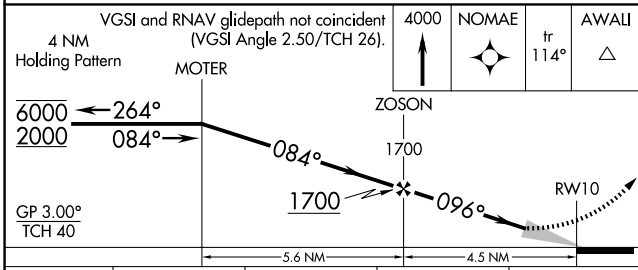
OAKDALE (O27)

RNP APCH-GPS.	MISSED APPROACH: Climb to 4000 direct NOMAE and on track 114° to AWALI and hold, continue climb-in-hold to 4000.
<p><b>NA</b> Baro-VNAV NA. Use Modesto altimeter setting; when not received, use Stockton Metro altimeter setting: increase LPV DA to 627 feet and all visibilities <math>\frac{1}{8}</math> SM; increase LNAV/VNAV DA to 588 feet and all visibilities <math>\frac{1}{8}</math> SM; increase all MDAs 40 feet and LNAV Cat C visibility <math>\frac{1}{8}</math> SM.</p>	

MOD ASOS <b>127.7</b>	NORCAL APP CON <b>125.1 363.2</b>	UNICOM <b>122.8 (CTAF)</b>
--------------------------	--------------------------------------	-------------------------------



ELEV 237	TDZE 236
----------	----------



CATEGORY	A	B	C	D
LPV DA	593-1 357 (400-1)			NA
LNAV/VNAV DA	554- $\frac{7}{8}$ 318 (400- $\frac{7}{8}$ )			NA
LNAV MDA	760-1	524 (600-1)	760-1 $\frac{1}{2}$ 524 (600-1 $\frac{1}{2}$ )	NA
<b>CIRCLING</b>	760-1 523 (600-1)	820-1 583 (600-1)	920-2 683 (700-2)	NA

REIL Rwy 10 and 28  
MIRL Rwy 10-28

SW-2, 20 FEB 2025 to 20 MAR 2025

SW-2, 20 FEB 2025 to 20 MAR 2025