

WAAS CH <b>70523</b> <b>W28A</b>	APP CRS <b>277°</b>	Rwy Idg <b>3013</b> TDZE <b>237</b> Apt Elev <b>237</b>
--	------------------------	---

# RNAV (GPS) RWY 28

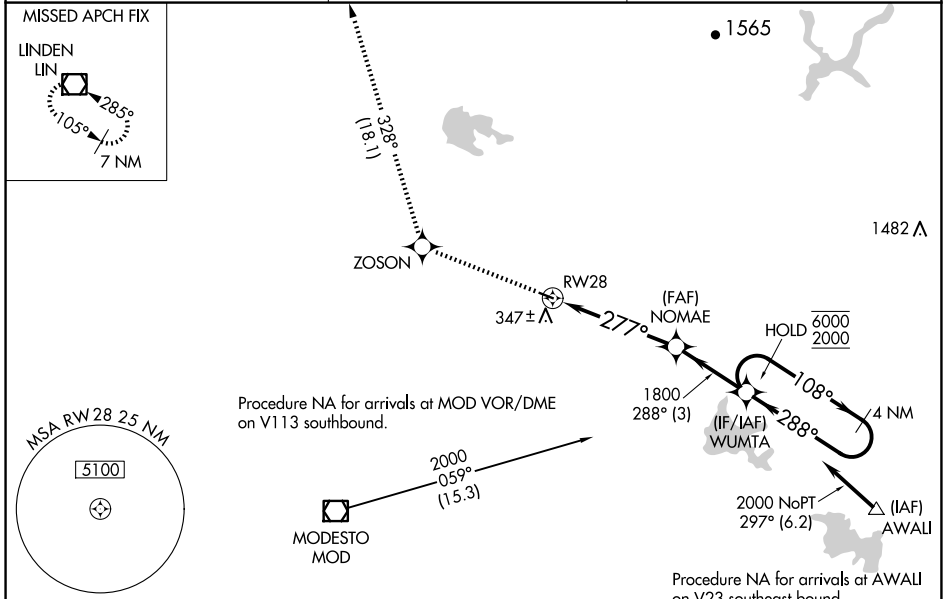
OAKDALE (O27)

RNP APCH-GPS.

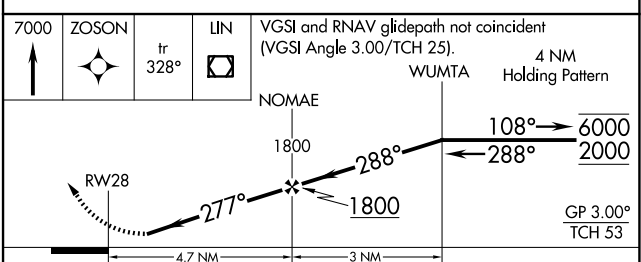
**NA** Rwy 28 helicopter visibility reduction below 3/4 SM NA. Baro-VNAV NA. Use Modesto altimeter setting; when not received, use Stockton altimeter setting; increase LPV DA to 581 feet and all visibilities 1/8 SM; increase LNAV/VNAV DA to 728 feet; increase all MDAs 40 feet.

MISSED APPROACH: Climb to 7000 direct ZOSON and on track 328° to LIN VOR/DME and hold, continue climb-in-hold to 7000.

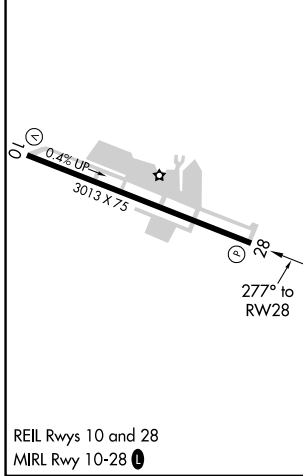
MOD ASOS <b>127.7</b>	NORCAL APP CON <b>125.1 363.2</b>	UNICOM <b>122.8 (CTAF) 0</b>
--------------------------	--------------------------------------	---------------------------------



ELEV 237	TDZE 237
----------	----------



CATEGORY	A	B	C	D
LPV DA	547-7/8	310 (400-7/8)		NA
LNAV/VNAV DA	694-13/8	457 (500-13/8)		NA
LNAV MDA	820-1	583 (600-1)	820-13/4 583 (600-13/4)	NA
<b>C</b> CIRCLING	820-1	583 (600-1)	920-2 683 (700-2)	NA



SW-2, 20 FEB 2025 to 20 MAR 2025

SW-2, 20 FEB 2025 to 20 MAR 2025