

APP CRS	Rwy Idg	2999
081°	TDZE	9
	Apt Elev	9

RNAV (GPS) RWY 8

THIBODAUX MUNI (L83)

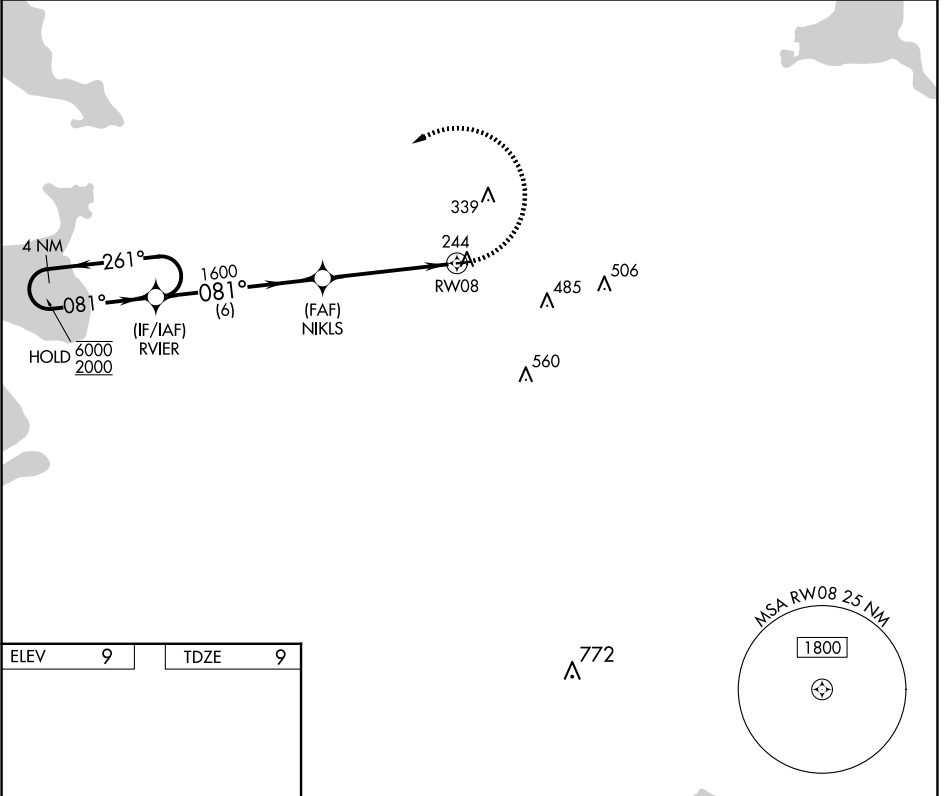
RNP APCH - GPS

NA Rwy 8 helicopter visibility reduction below 1 SM NA. Procedure NA at night. Obtain local altimeter setting on CTAF; when not received, use MSY altimeter setting and increase all MDAs 80 feet.

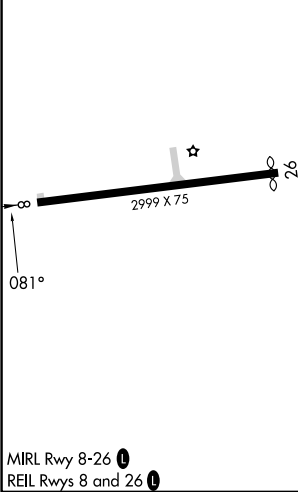
MISSED APPROACH: Climbing left turn 2000 direct RVIER and hold.

NEW ORLEANS APP CON
118.9 256.9

UNICOM
122.8 (CTAF)



ELEV	9	TDZE	9
------	----------	------	----------



4 NM Holding Pattern		RVIER	2000	RVIER
6000	← 261°	RVIER	2000	RVIER
2000	→ 081°			
		NIKLS	1600	
			3.00°	
			TCH 55	
			6 NM	4.8 NM
CATEGORY	A	B	C	D
LNAV MDA	460-1	451 (500-1)	NA	
CIRCLING	660-1	651 (700-1)	NA	

MIRL Rwy 8-26 **1**
REIL Rwy 8 and 26 **1**

SC-4, 20 FEB 2025 to 20 MAR 2025

SC-4, 20 FEB 2025 to 20 MAR 2025