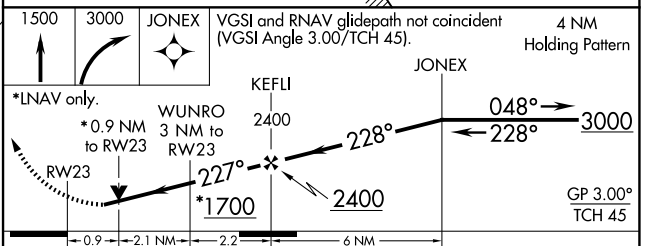
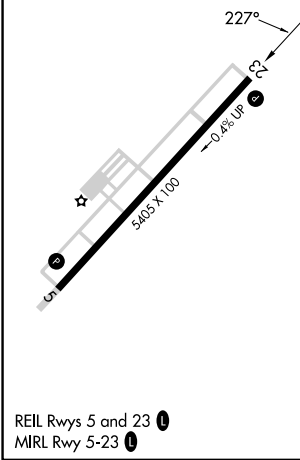
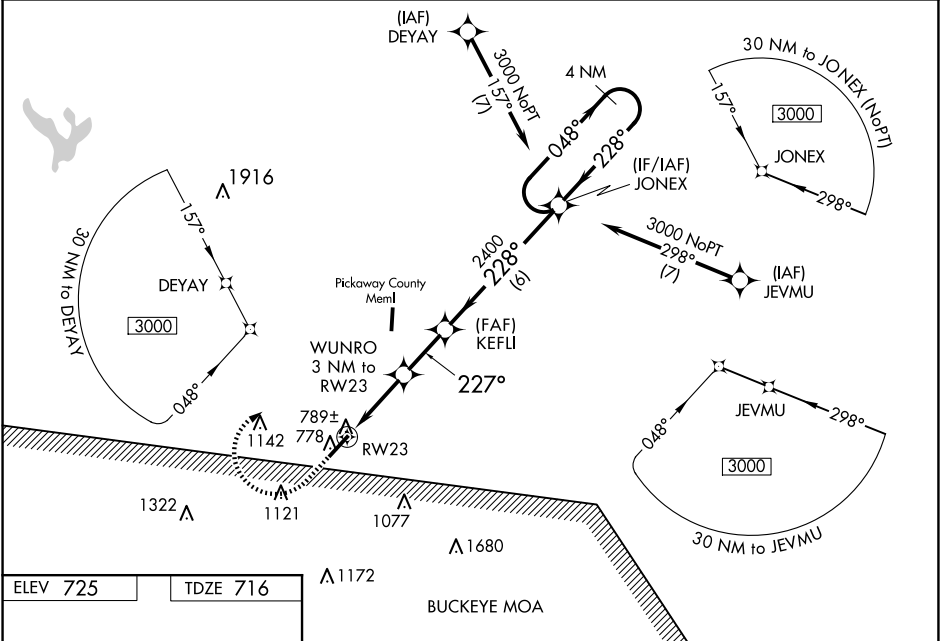


WAAS CH <b>69329</b> <b>W23A</b>	APP CRS <b>227°</b>	Rwy Idg TDZE Apt Elev	<b>5405</b> <b>716</b> <b>725</b>
--	------------------------	-----------------------------	---

# RNAV (GPS) RWY 23

ROSS COUNTY (R/ZT)

RNP APCH - GPS.			MISSED APPROACH: Climb to 1500 then climbing right turn to 3000 direct JONEX and hold.
For uncompensated Baro-VNAV systems, LNAV/VNAV NA below -16°C or above 54°C. When local altimeter setting not received, use Rickenbacker Intl altimeter setting and increase all DA/MDA 60 feet, increase LPV all Cats, LNAV/VNAV all Cats and LNAV Cat C and D and Circling Cat C visibility ¼ mile. Baro-VNAV and VDP NA when using Rickenbacker Intl altimeter setting. Rwy 23 helicopter visibility reduction below ¾ SM NA.			
AWOS-3 <b>119.225</b>	COLUMBUS APP CON <b>134.0 279.6</b>	UNICOM <b>122.8 (CTAF)</b>	<b>123.0</b>



CATEGORY	A	B	C	D
LPV DA		966-¾	250 (300-¾)	
LNAV/VNAV DA		1088-1¼	372 (400-1¼)	
LNAV MDA		1040-1	324 (400-1)	
CIRCLING	1320-1	1380-1	1500-2¼	1540-2¾
	595 (600-1)	655 (700-1)	775 (800-2¼)	815 (900-2¾)

EC-2, 20 FEB 2025 to 20 MAR 2025

EC-2, 20 FEB 2025 to 20 MAR 2025