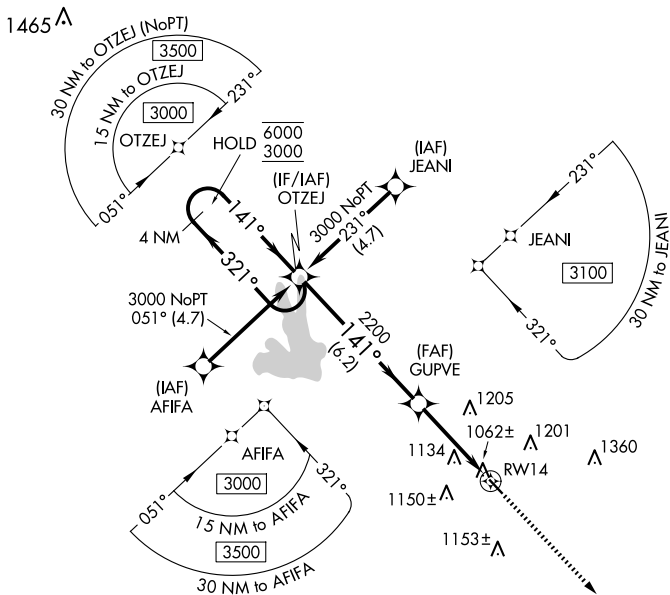


WAAS CH <b>70429</b> <b>W14A</b>	APP CRS <b>141°</b>	Rwy Idg TDZE Apt Elev	<b>3201</b> <b>958</b> <b>958</b>
--	------------------------	-----------------------------	---

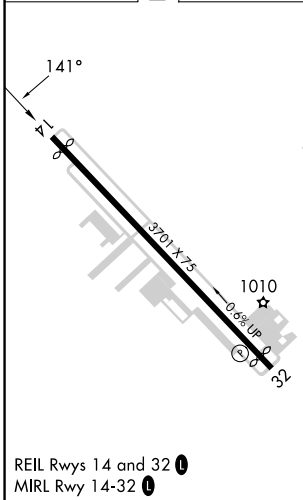
# RNAV (GPS) RWY 14

GRIFFIN-SPALDING COUNTY (6A2)

RNP APCH - GPS.		MISSED APPROACH: Climb to 3000 direct LUFEV and hold.	
<p><b>Procedure NA at night.</b> Rwy 14 helicopter visibility reduction below 1 SM NA.</p>			
AWOS-3 <b>119.750</b>	ATLANTA APP CON <b>128.575 343.675</b>	CLNC DEL <b>128.575 343.675</b>	UNICOM <b>123.075 (CTAF) 0</b>



ELEV 958	<b>D</b>	TDZE 958
----------	----------	----------



CATEGORY	A	B	C	D
LP MDA	1320-1	362 (400-1)	NA	
LNAV MDA	1440-1	482 (500-1)	NA	

SE-4, 20 FEB 2025 to 20 MAR 2025

SE-4, 20 FEB 2025 to 20 MAR 2025