

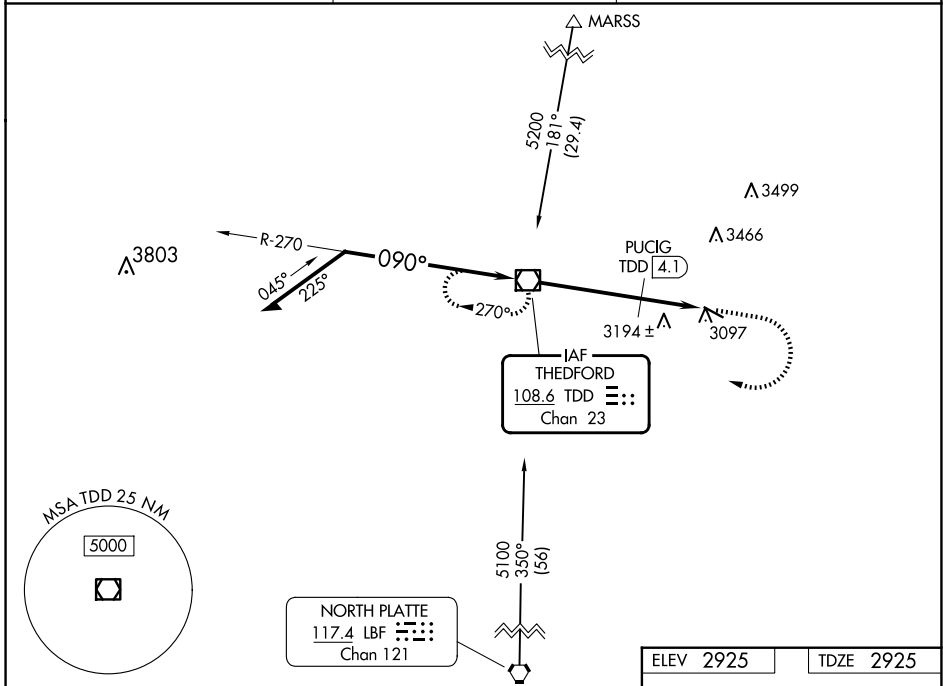
VOR/DME TDD 108.6 Chan 23	APP CRS 090°	Rwy Idg TDZE Apt Elev	4402 2925 2925
---	------------------------	-----------------------------	---

VOR RWY 11
THOMAS COUNTY (TIF')

NA Visibility reduction by helicopters NA. When local altimeter setting not received, use North Platte altimeter setting and increase all MDA 140 feet, increase S-11 Cat B and Circling Cat B visibility 1/4 mile. VDP NA when using North Platte altimeter setting.

MISSED APPROACH: Climb to 4000 then climbing right turn to 5100 direct TDD VOR/DME and hold.

AWOS-3 120.825	DENVER CENTER 127.95 338.2	CTAF 122.9
--------------------------	--------------------------------------	----------------------



NC-2, 20 FEB 2025 to 20 MAR 2025

NC-2, 20 FEB 2025 to 20 MAR 2025

ELEV 2925		TDZE 2925	
Remain within 10 NM		4000	5100
5100		TDD	
*3780 when using North Platte altimeter setting.		☐	
TDD VOR/DME		PUCIG TDD 4.1	
270°		TDD 4.8	
090°		TDD 6.4	
5100		TDD 4.8	
*3640		TDD 6.4	
TCH 40		TDD 4.8	
4.1 NM		0.7	
		1.6 NM	
		D	
CATEGORY	A	B	D
S-11	3640-1	715 (800-1)	NA
CIRCLING	3640-1	715 (800-1)	NA
PUCIG FIX MINIMUMS			
S-11	3500-1	575 (600-1)	NA
CIRCLING	3500-1	575 (600-1)	NA
MIRL Rwy 11-29			
REIL Rwy 11 and 29			
FAF to MAP 6.4 NM			
Knots	60	90	120 150 180
Min:Sec	6:30	4:20	3:15 2:36 2:10