

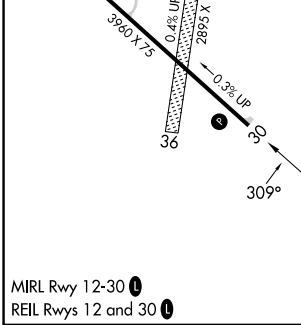
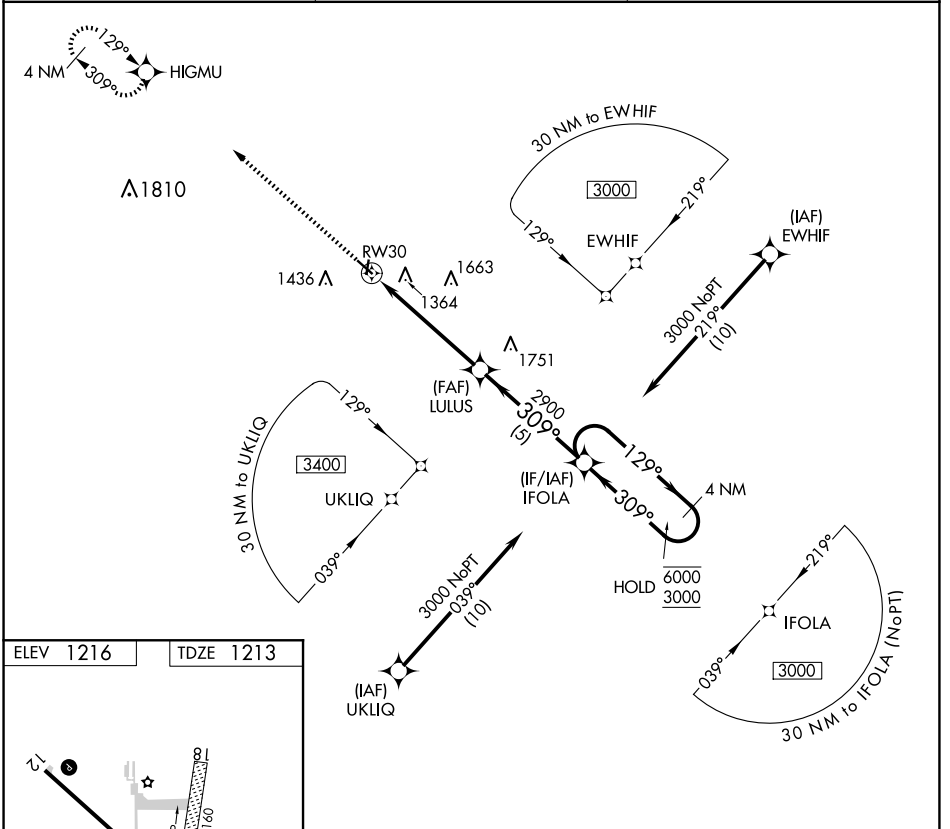
APP CRS	Rwy Idg	3960
309°	TDZE	1213
	Apt Elev	1216

RNAV (GPS) RWY 30

ALGONA MUNI (A.X.A)

RNP APCH.	MISSED APPROACH: Climb to 3000 direct HIGMU and hold.
▼ Rwy 30 helicopter visibility reduction below 3/4 SM NA.	

AWOS-3 118.475	MINNEAPOLIS CENTER 134.0 288.3	UNICOM 122.8 (CTAF) 0
--------------------------	--	---------------------------------



3000 HIGMU	IFOLA 4 NM Holding Pattern
1.1 NM to RW30	LULUS 2900
≤ 3.00° TCH 40	6000 3000
1.1 4.1 NM 5 NM	
CATEGORY	A B C D
LNAV MDA	1600-1 387 (400-1) NA

MIRL Rwy 12-30 0
REIL Rwy 12 and 30 0

ALGONA, IOWA
Amdt 1D 07NOV19

43°05'N-94°16'W

ALGONA MUNI (A.X.A)

RNAV (GPS) RWY 30

NC-3, 20 FEB 2025 to 20 MAR 2025

NC-3, 20 FEB 2025 to 20 MAR 2025