

WAAS CH 42844 W01A	APP CRS 014°	Rwy ldg 5201 TDZE 835 Apt Elev 835
--	------------------------	---

RNAV (GPS) RWY 1

GRANBURY RGNL (G.DJ)

RNP APCH - GPS.

▼ Rwy 1 helicopter visibility reduction below 3/4 SM NA. For uncompensated Baro-VNAV systems, LNAV/VNAV NA below -16°C or above 54°C.

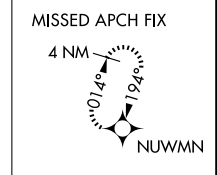
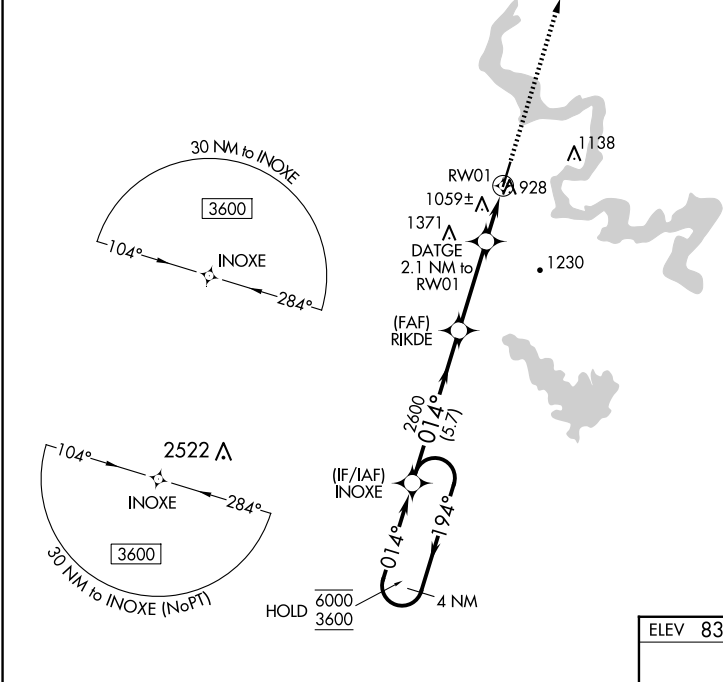
▲

MISSED APPROACH: Climb to 3600 direct NUWMN and hold, continue climb-in-hold to 3600.

AWOS-3PT
118.925

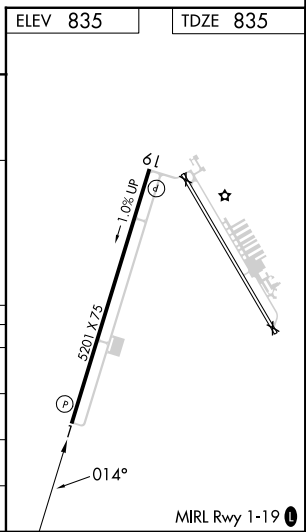
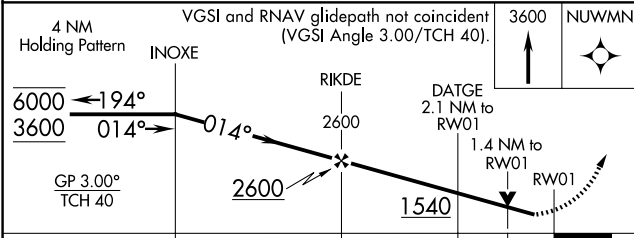
FORT WORTH CENTER
127.15 314.0

UNICOM
123.0 (CTAF) 0



SC-2, 20 FEB 2025 to 20 MAR 2025

SC-2, 20 FEB 2025 to 20 MAR 2025



CATEGORY	A	B	C	D
LPV DA	1139-7/8	304 (400-7/8)		NA
LNAV/VNAV DA	1320-13/8	485 (500-13/8)		NA
LNAV MDA	1320-1	485 (500-1)	1320-13/8 485 (500-13/8)	NA
C CIRCLING	1360-1 525 (600-1)	1380-1 545 (600-1)	1680-2 1/2 845 (900-2 1/2)	NA