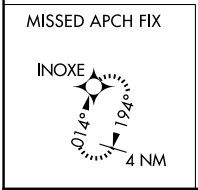
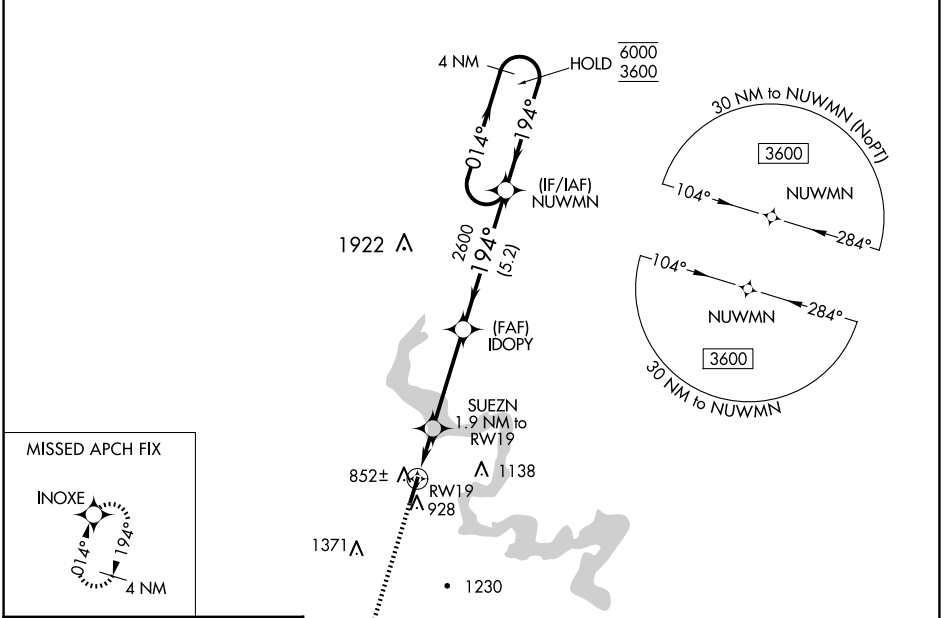


| | | |
|--|------------------------|---|
| WAAS CH 82144 W19A | APP CRS 194° | Rwy Idg 5201 TDZE 813 Apt Elev 835 |
|--|------------------------|---|

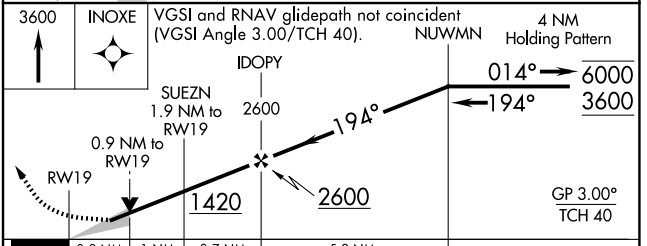
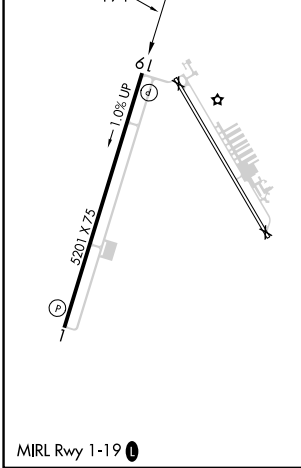
RNAV (GPS) RWY 19

GRANBURY RGNL (GDJ)

| | | |
|--|--|---|
| RNP APCH - GPS. | | MISSED APPROACH: Climb to 3600 direct INOXE and hold, continue climb-in-hold to 3600. |
| ⚠ For uncompensated Baro-VNAV systems, LNAV/VNAV NA below -16°C or above 54°C. | | |
| AWOS-3PT 118.925 | FORT WORTH CENTER 127.15 314.0 | UNICOM 123.0 (CTAF) 0 |



| | |
|----------|----------|
| ELEV 835 | TDZE 813 |
|----------|----------|



| CATEGORY | A | B | C | D |
|-------------------|-----------------------------------|-----------------------|--|----|
| LPV DA | 1013- ³ / ₄ | | 200 (200- ³ / ₄) | NA |
| LNAV/VNAV DA | 1063- ³ / ₄ | | 250 (300- ³ / ₄) | NA |
| LNAV MDA | 1120-1 | 307 (300-1) | 1120- ⁷ / ₈ 307 (300- ⁷ / ₈) | NA |
| C CIRCLING | 1360-1 525 (600-1) | 1380-1 545 (600-1) | 1680-2 ¹ / ₂ 845 (900-2 ¹ / ₂) | NA |

SC-2, 20 FEB 2025 to 20 MAR 2025

SC-2, 20 FEB 2025 to 20 MAR 2025