

WAAS CH 93920 W31A	APP CRS 308°	Rwy Idg TDZE Apt Elev	4010 1123 1123
--	------------------------	-----------------------------	---

RNAV (GPS) RWY 31

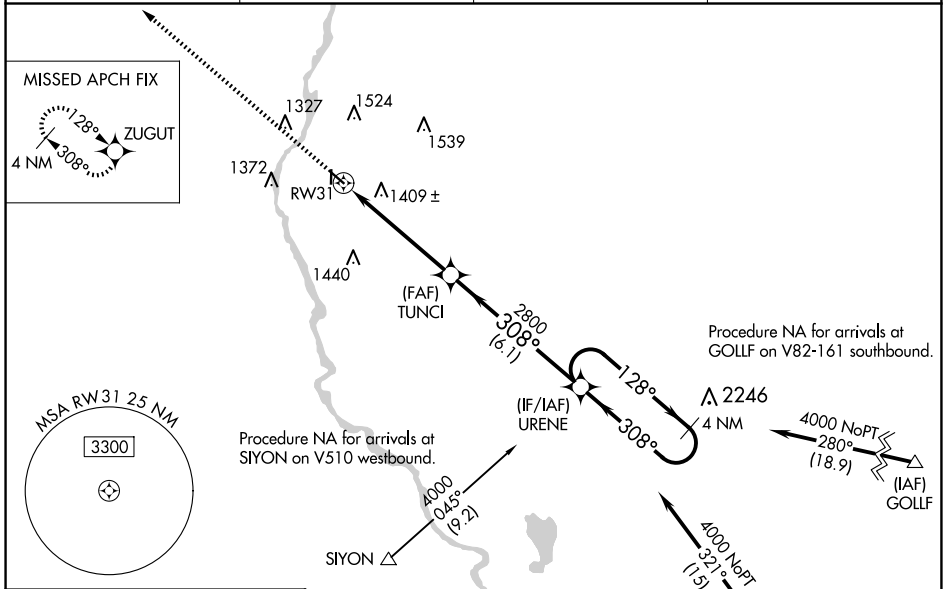
LITTLE FALLS/MORRISON COUNTY-LINDBERGH FLD (LXL)

RNP APCH.

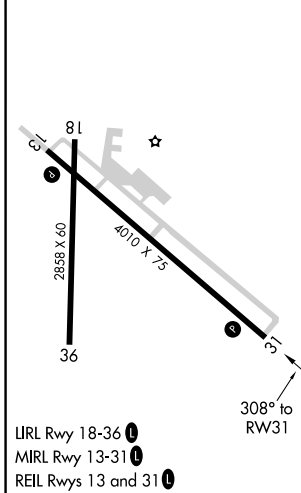
▼ Baro-VNAV NA when using St Cloud altimeter setting. For uncompensated Baro-VNAV systems, LNAV/VNAV NA below -17°C or above 32°C. Rwy 31 visibility reduction below ¼ SM by helicopters NA. When local altimeter setting not received, use St. Cloud altimeter setting and increase all DAs 76 feet and all MDAs 80 feet; increase LPV all Cats visibility ½ SM and LNAV/VNAV all Cats, LNAV Cat C/D and Circling Cat C/D visibility ¼ SM. Circling Rwy 18, 36 NA.

⚠ MISSED APPROACH: Climb to 3000 direct ZUGUT and hold.

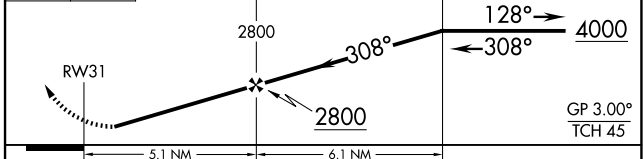
AWOS-3 119.45	MINNEAPOLIS CENTER 118.05 239.0	GCO 121.725	UNICOM 122.8 (CTAF) 0
-------------------------	---	-----------------------	--



ELEV 1123	D	TDZE 1123
-----------	----------	-----------



3000 ZUGUT VGS1 and RNAV glidepath not coincident (VGS1 Angle 3.00/TCH 25). 4 NM Holding Pattern



CATEGORY	A	B	C	D
LPV DA		1517-1 ³ / ₈	394 (400-1 ³ / ₈)	
LNAV/VNAV DA		1749-2 ¹ / ₄	626 (700-2 ¹ / ₄)	
LNAV MDA	1660-1	537 (600-1)	1660-1 ¹ / ₂	537 (600-1 ¹ / ₂)
CIRCLING	1700-1	1800-1	1840-2	2000-2 ³ / ₄
	577 (600-1)	677 (700-1)	717 (800-2)	877 (900-2 ³ / ₄)

RNAV (GPS) RWY 31

NC-1, 20 FEB 2025 to 20 MAR 2025

NC-1, 20 FEB 2025 to 20 MAR 2025