

APP CRS	Rwy Idg	4000
043°	TDZE	429
	Apt Elev	429

RNAV (GPS) RWY 4

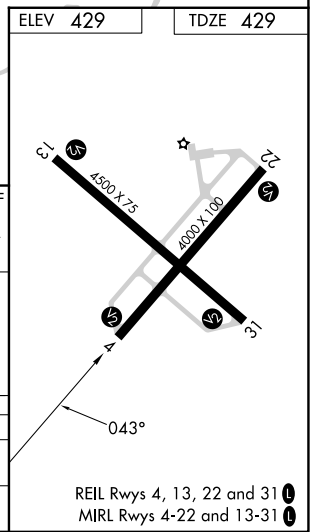
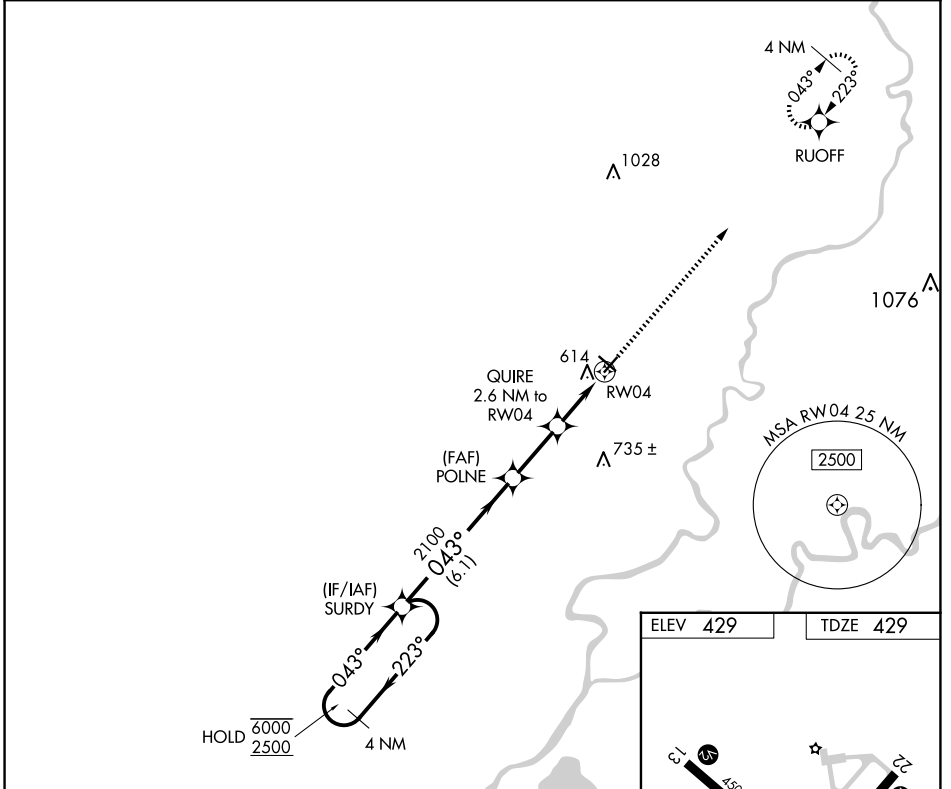
MOUNT CARMEL MUNI (AJG)

RNP APCH.

▼ Rwy 4 helicopter visibility reduction below 3/4 SM NA.
For uncompensated Baro-VNAV systems, LNAV/VNAV NA below -15°C or above 54°C.

MISSED APPROACH: Climb to 2500 direct RUOFF and hold.

AWOS-3 134.9	EVANSVILLE APP CON★ 125.6 343.7	UNICOM 122.7 (CTAF)
------------------------	---	-------------------------------



4 NM Holding Pattern	SURDY			VGSI and RNAV glidepath not coincident (VGSI Angle 3.00/TCH 23).	2500	RUOFF
6000 ← 223°	← 223°	043° →	043°	POLNE	QUIRE	*LNAV only
2500				2100	2.6 NM to RW04	
GP 3.00°				*1300	*1.5 NM to RW04	
TCH 40					RW04	
	← 6.1 NM	← 2.5 NM	← 1.1 NM	← 1.5 NM		
CATEGORY	A	B	C	D		
LNAV/VNAV	DA	937-1 3/4	508 (600-1 3/4)	NA		
LNAV MDA	920-1	491 (500-1)	920-1 1/4	491 (500-1 1/4)	NA	

EC-3, 20 FEB 2025 to 20 MAR 2025

EC-3, 20 FEB 2025 to 20 MAR 2025

REIL Rwy 4, 13, 22 and 31
MIRL Rwy 4-22 and 13-31