

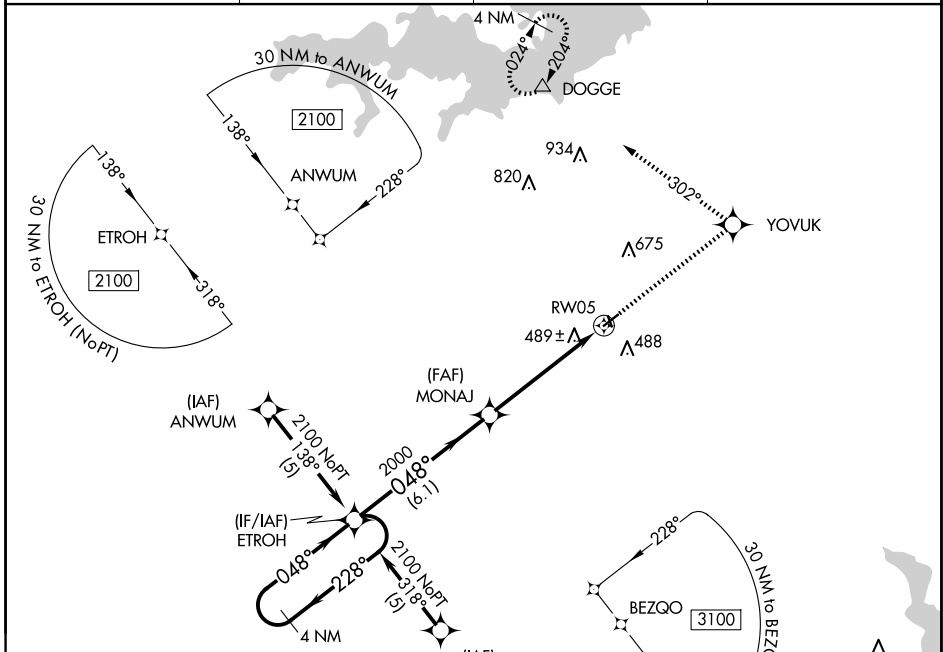
APP CRS	Rwy Idg	3800
048°	TDZE	280
	Apt Elev	280

RNAV (GPS) RWY 5

HALL-MILLER MUNI (ATA)

RNP APCH.		MISSED APPROACH: Climb to 3000 direct YOYUK and left turn via 302° track to DOGGE and hold.
▼	Rwy 5 helicopter visibility reduction below 3/4 SM NA. Use Texarkana altimeter setting, when not received use Mount Pleasant altimeter setting and increase all MDA 40 feet.	
▲ NA		

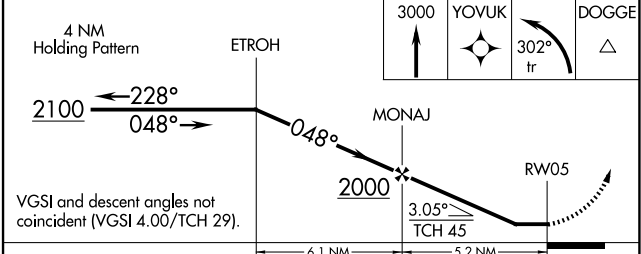
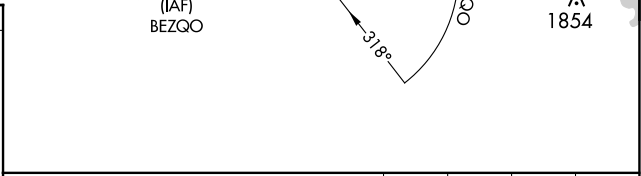
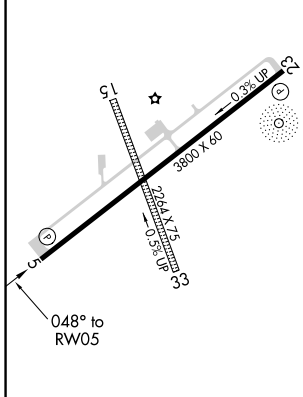
AWOS-3 118.250	TXK ASOS 120.2	FORT WORTH CENTER 123.925 269.475	CTAF 122.9
--------------------------	--------------------------	---	----------------------



SC-2, 20 FEB 2025 to 20 MAR 2025

SC-2, 20 FEB 2025 to 20 MAR 2025

ELEV	280	TDZE	280
------	-----	------	-----



MIRL Rwy 5-23	REIL Rwy 5 and 23
---------------	-------------------

CATEGORY	A	B	C	D
LNAV MDA	860-1	580 (600-1)	NA	