

WAAS CH 81935 W26A	APP CRS 259°	Rwy Idg TDZE Apt Elev	4051 696 698
--	------------------------	-----------------------------	---

RNAV (GPS) RWY 26

LAURENS COUNTY (LUX)

RNP APCH-GPS.

▼ Rwy 26 helicopter visibility reduction below 3/4 SM NA.

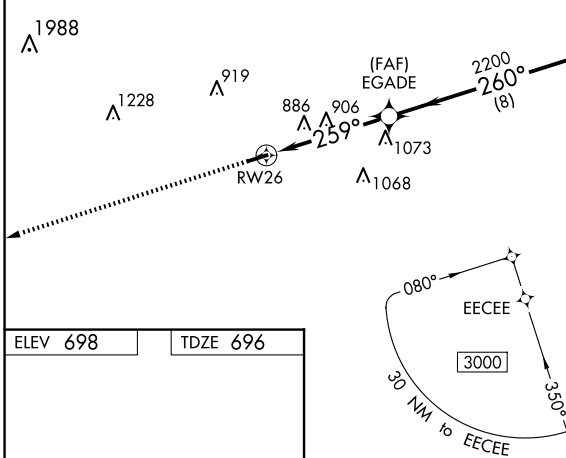
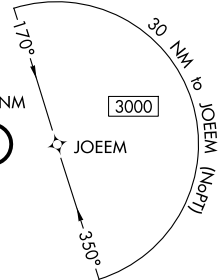
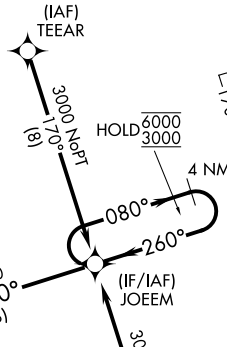
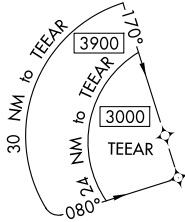
MISSED APPROACH: Climb to 3000 direct REINR and hold.

AWOS-3
123.975

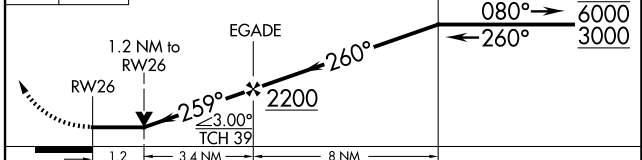
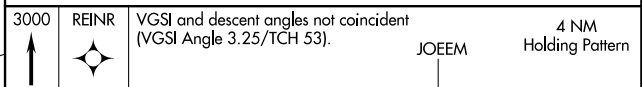
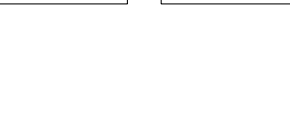
GREER APP CON ★
120.6 350.2

UNICOM
122.8 (CTAF) 0

MISSED APCH FIX



ELEV 698 TDZE 696



CATEGORY	A	B	C	D
LP MDA	1160-1	464 (500-1)		NA
LNAV MDA	1160-1	464 (500-1)		NA
<input checked="" type="checkbox"/> CIRCLING	1200-1	502 (600-1)		NA

REIL Rws 8 and 26 0
MIRL Rwy 8-26 0

SE-2, 20 FEB 2025 to 20 MAR 2025

SE-2, 20 FEB 2025 to 20 MAR 2025