

APP CRS	Rwy Idg	6600
083°	TDZE	9
	Apt Elev	9

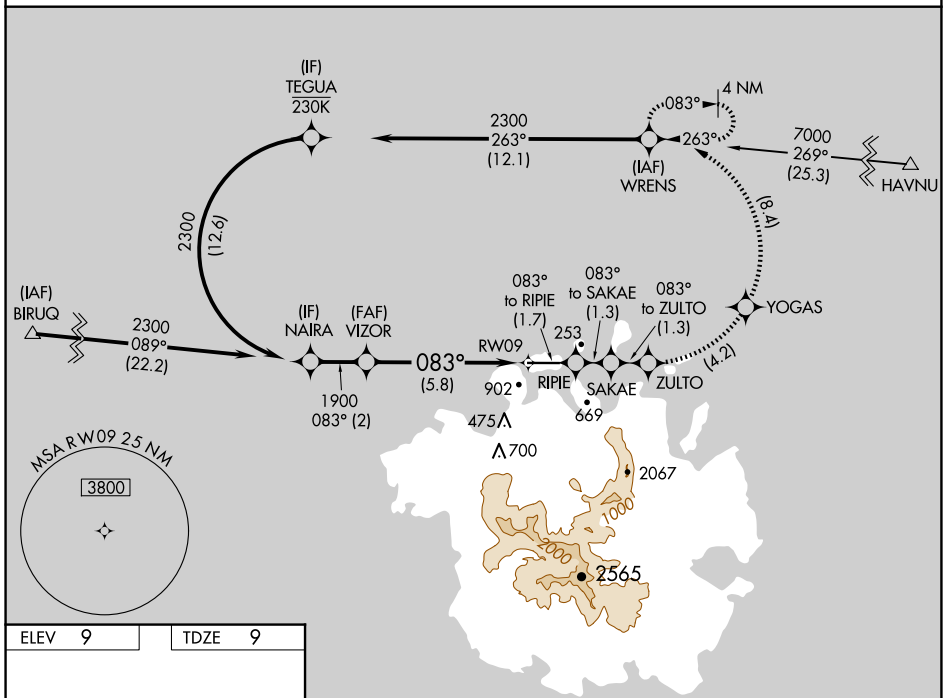
RNAV (RNP) Z RWY 9

POHNPEI INTL (PNI)(PTPN)

▼ Obtain local altimeter setting on CTAF; when not received, procedure NA. For uncompensated Baro-VNAV systems, procedure NA below 20°C (68°F) or above 54°C (130°F). Missed approach requires RNP less than 1.0. RF required. GPS required. No controlled airspace below 5500 feet.

MISSED APPROACH: (Do not exceed 230K until WRENS) Climb to 2300 on the RNAV missed approach route to WRENS and hold.

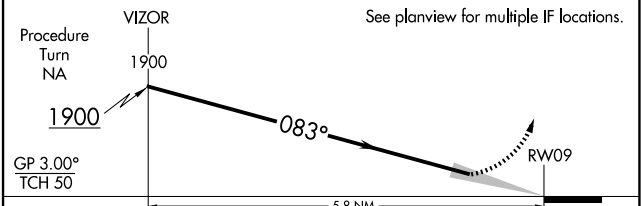
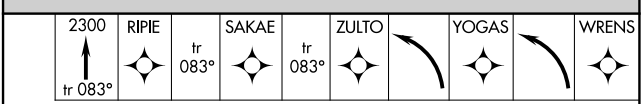
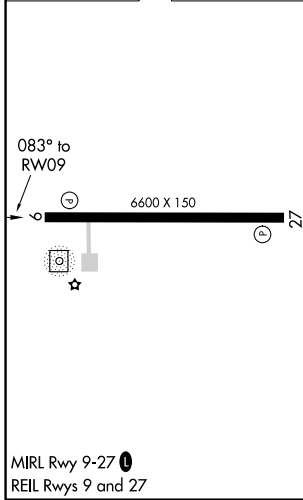
POHNPEI RADIO
123.6 (CTAF) 0



PAC, 20 FEB 2025 to 17 APR 2025

PAC, 20 FEB 2025 to 17 APR 2025

ELEV 9	TDZE 9
--------	--------



CATEGORY	A	B	C	D
RNP 0.15 DA	259-1 250 (300-1)			

AUTHORIZATION REQUIRED