

LOC/DME I-CFQ <b>110.35</b> Chan 40 (Y)	APP CRS <b>101°</b>	Rwy Idg <b>4001</b> TDZE <b>928</b> Apt Elev <b>928</b>
---	------------------------	---

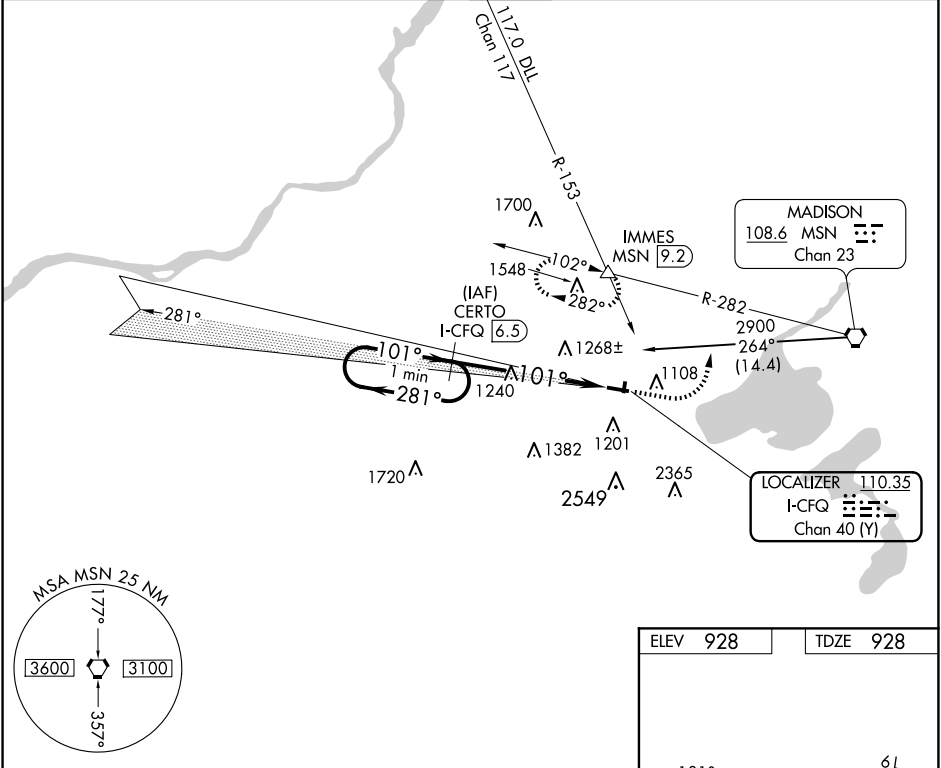
# LOC/DME RWY 10

MIDDLETON MUNI/MOREY FLD (C29)

**▼** Helicopter visibility reduction below 3/4 SM NA. Use Dane County Rgnl-Truax Fld altimeter setting; when not received, use Baraboo altimeter setting and increase all MDAs 60 feet and S-10 Cat C visibility 1/4 SM and Circling Cat C visibility 1/4 SM. Circling NA to Rwy 1 and 19.

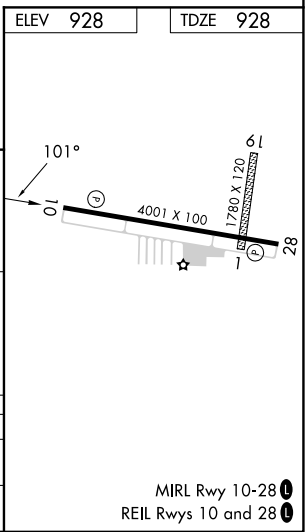
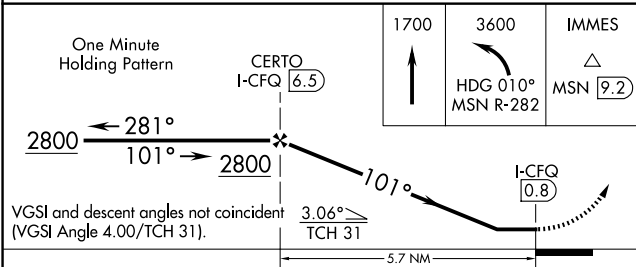
**▲ NA** MISSED APPROACH: Climb to 1700 then climbing left turn to 3600 via heading 010° and MSN VORTAC R-282 to IMMES Int/MSN 9.2 DME and hold, continue climb-in-hold to 3600.

AWOS-3 <b>118.675</b>	MADISON APP CON★ <b>135.45 343.7</b>	UNICOM <b>123.0 (CTAF) 0</b>
--------------------------	---	---------------------------------



EC-3, 20 FEB 2025 to 20 MAR 2025

EC-3, 20 FEB 2025 to 20 MAR 2025



CATEGORY	A	B	C	D
S-10	1580-1	652 (700-1)	1580-1 3/4 652 (700-1 3/4)	NA
CIRCLING	1580-1 652 (700-1)	1640-1 712 (800-1)	1660-2 732 (800-2)	NA