

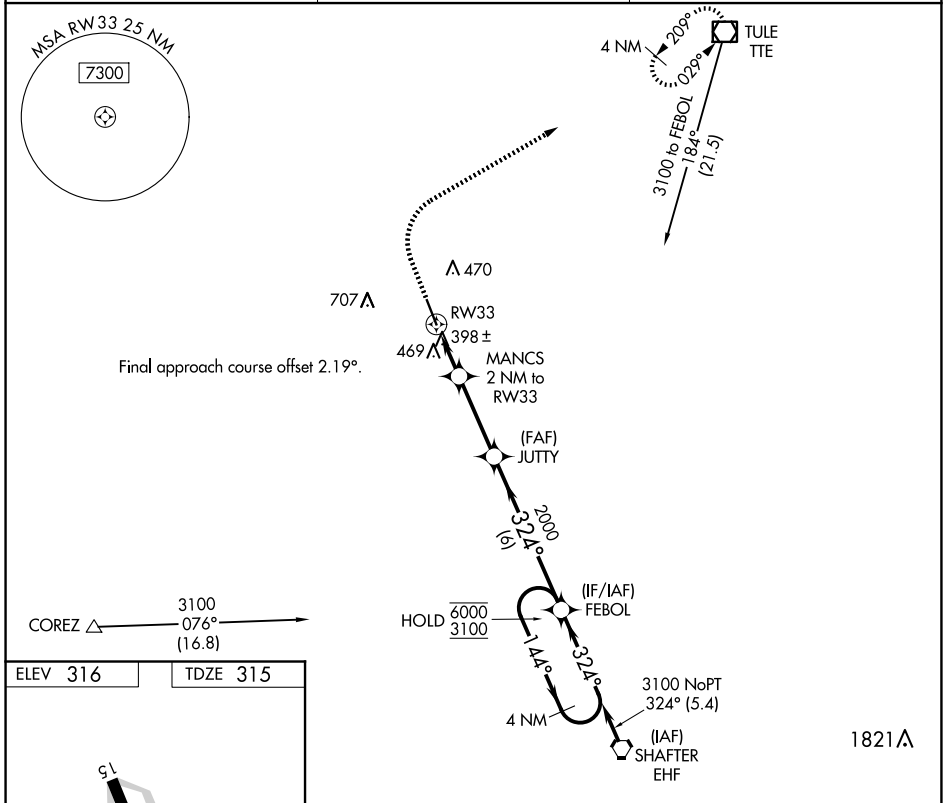
APP CRS 324°	Rwy Idg 5659
TDZE 315	
Apt Elev 316	

RNAV (GPS) RWY 33

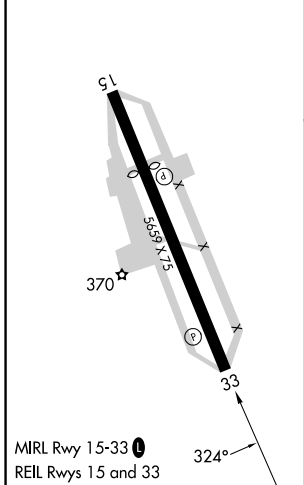
DELANO MUNI (DLO)

RNP APCH - GPS.	MISSED APPROACH: Climb to 800 then climbing right turn to 3100 direct TTE VOR/DME and hold.
<p>⚠ Circling NA southwest of Rwy 15-33.</p> <p>⚠ When local altimeter setting not received, procedure NA.</p>	

AWOS-3P 119.55	BAKERSFIELD APP CON ★ 118.9	UNICOM 122.8 (CTAF) 0
--------------------------	---------------------------------------	---------------------------------



ELEV 316	TDZE 315
----------	----------



800	3100	TTE	VGSIs and descent angles not coincident.			
↑	↷	☐	MANCS 2 NM to RW33	JUTTY	FEBOL	4 NM Holding Pattern
			1.2 NM to RW33	0.9 NM	3.1 NM	6 NM
			1000	2000	3100	6000
			1.2 NM	0.9 NM	3.1 NM	6 NM
CATEGORY	A	B	C	D		
LNAV MDA	720-1	405 (500-1)	720-1½	405 (500-1½)		
CIRCLING	760-1	780-1	820-1½	960-2		
	444 (500-1)	464 (500-1)	504 (600-1½)	644 (700-2)		

SW-3, 20 FEB 2025 to 20 MAR 2025

SW-3, 20 FEB 2025 to 20 MAR 2025