

VORTAC EHF 115.4 Chan 101	APP CRS 322°	Rwy Idg TDZE 315 Apt Elev 316
---	------------------------	---

VOR RWY 33

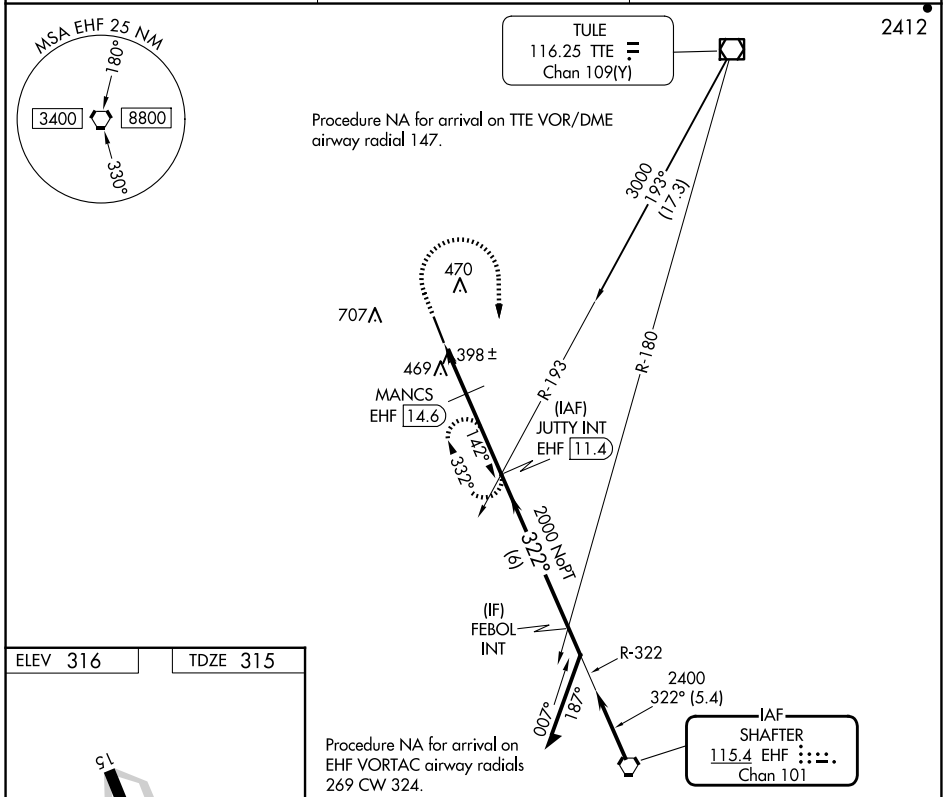
DELANO MUNI (DLO)

DME required.

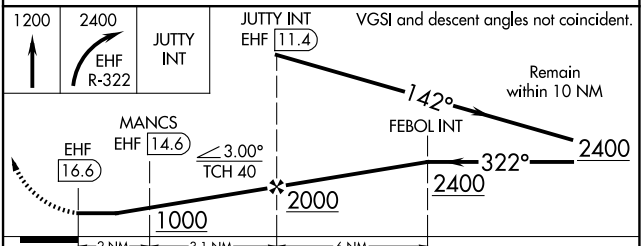
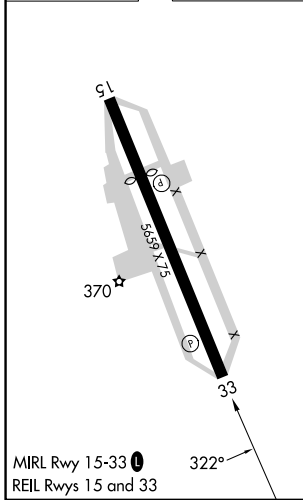
⚠ Circling NA southwest of Rwy 15-33.
⚠ When local altimeter setting not received, procedure NA.

MISSED APPROACH: Climb to 1200 then climbing right turn to 2400 on EHF VORTAC R-322 to JUTTY INT/EHF 11.4 DME and hold. Continue climb-in-hold to 2400.

AWOS-3P 119.55	BAKERSFIELD APP CON* 118.9	UNICOM 122.8 (CTAF) 0
--------------------------	--------------------------------------	--



ELEV 316	TDZE 315
----------	----------



CATEGORY	A	B	C	D
S-33	860-1 545 (600-1)		860-1½ 545 (600-1½)	
CIRCLING	860-1 544 (600-1)		860-1½ 544 (600-1½)	960-2 644 (700-2)

SW-3, 20 FEB 2025 to 20 MAR 2025

SW-3, 20 FEB 2025 to 20 MAR 2025