

APP CRS	Rwy Idg	4429
234°	TDZE	823
	Apt Elev	833

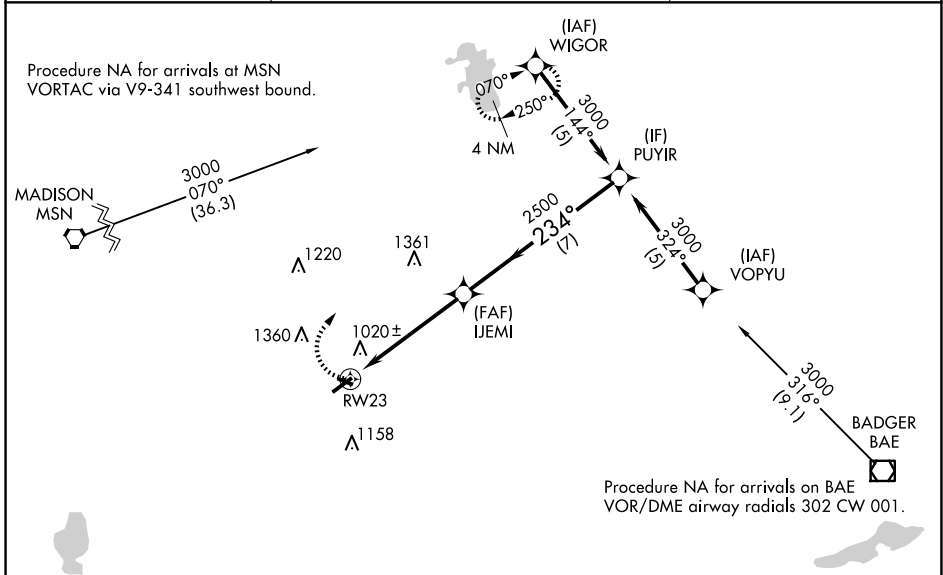
RNAV (GPS) RWY 23

WATERTOWN MUNI (RYV)

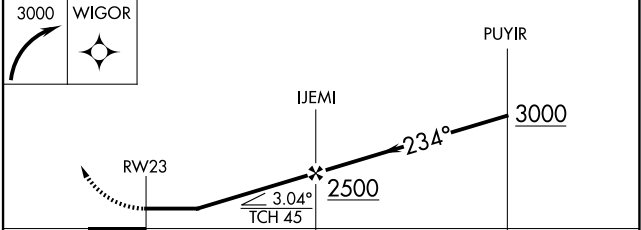
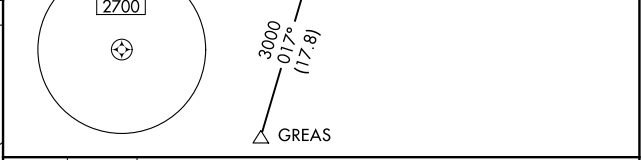
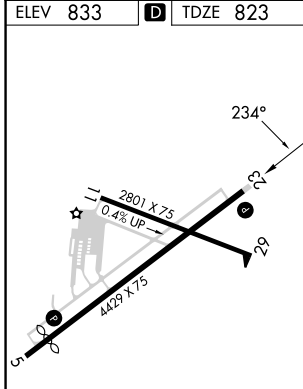
⚠ Rwy 23 helicopter visibility reduction below 1 SM NA. DME/DME RNP-0.3 NA. When local altimeter setting not received, use Dodge County altimeter setting and increase all MDAs 60 feet, increase LNAV Cat C and D visibility 1/8 SM. Straight-in Rwy 23 NA at night, Circling Rwy 23 NA at night.

⚠ MISSED APPROACH: Climbing right turn to 3000 direct WIGOR and hold.

AWOS-3 119.975	MADISON APP CON * 119.15 343.7	UNICOM 122.8 (CTAF)
--------------------------	--	-------------------------------



ELEV 833	D	TDZE 823
----------	----------	----------



CATEGORY	A	B	C	D
LNAV MDA	1420-1 597 (600-1)		1420-1 3/4 597 (600-1 3/4)	
CIRCLING	1420-1 587 (600-1)	1440-1 607 (700-1)	1720-2 3/4 887 (900-2 3/4)	1720-3 887 (900-3)

REIL Rws 5 and 23 **⓪**
MIRL Rws 5-23 and 11-29 **⓪**

EC-3, 20 FEB 2025 to 20 MAR 2025

EC-3, 20 FEB 2025 to 20 MAR 2025