

APP CRS	Rwy Idg	2801
293°	TDZE	833
	Apt Elev	833

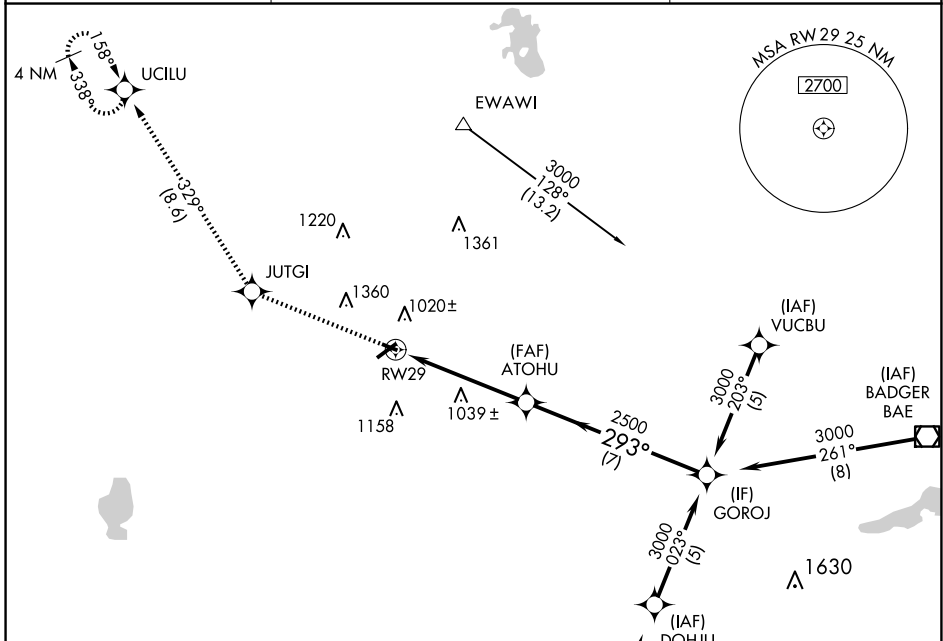
RNAV (GPS) RWY 29

WATERTOWN MUNI (RYV)

⚠ Circling to Rwy 23 NA at night. Rwy 29 helicopter visibility reduction below 1 SM NA. DME/DME RNP-0.3 NA. When local altimeter setting not received, use Dodge County altimeter setting and increase all MDAs 60 feet and LNAV visibility Cat C/D 1/8 SM.

MISSED APPROACH: Climb to 3000 direct JUTGI and right turn via 329° track to UCILU and hold.

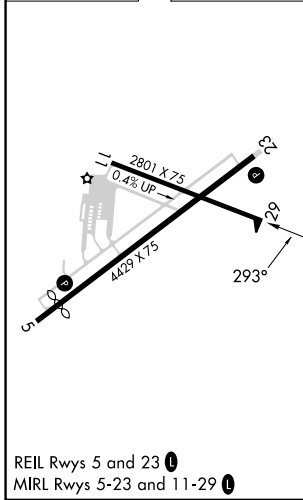
AWOS-3 119.975	MADISON APP CON * 119.15 343.7	UNICOM 122.8 (CTAF)
--------------------------	--	-------------------------------



EC-3, 20 FEB 2025 to 20 MAR 2025

EC-3, 20 FEB 2025 to 20 MAR 2025

ELEV 833	D	TDZE 833
----------	----------	----------



	3000	JUTGI	UCILU	
	↑	↻ tr 329°	✧	
		ATOHU	GOROJ	
		3000		
		293°		
		2500		
		3.04° TCH 40		
		5 NM	7 NM	
CATEGORY	A	B	C	D
LNAV MDA	1400-1	567 (600-1)	1400-1½ 567 (600-1½)	1400-1¾ 567 (600-1¾)
CIRCLING	1400-1 567 (600-1)	1440-1 607 (700-1)	1720-2¾ 887 (900-2¾)	1720-3 887 (900-3)