

APP CRS 002°	Rwy Idg 5001
	TDZE 673
	Apt Elev 679

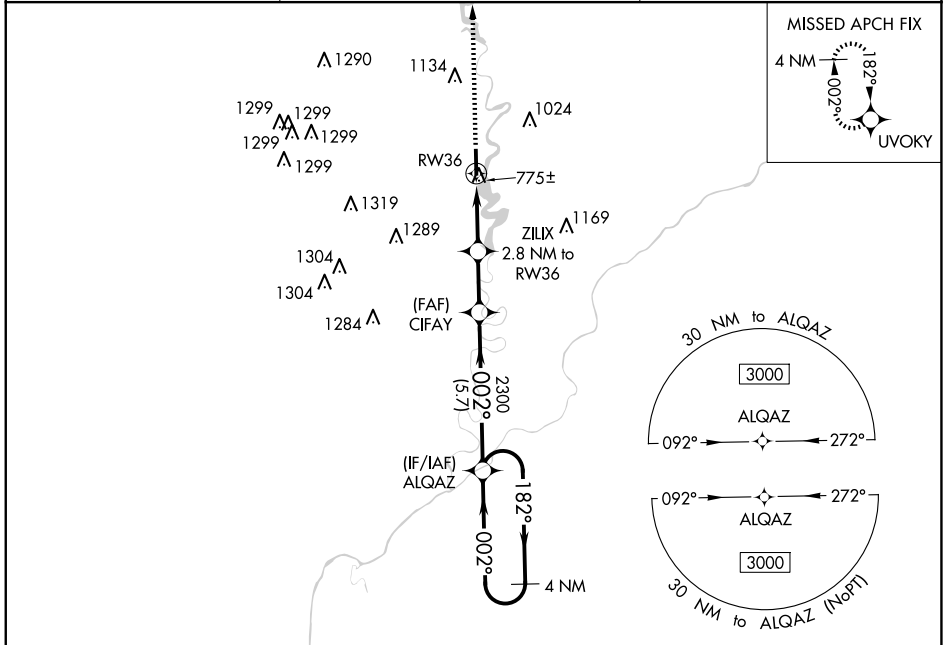
RNAV (GPS) RWY 36

WHITE COUNTY (MCX)

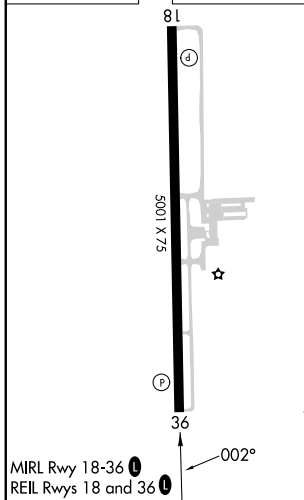
▽ DME/DME RNP-0.3 NA. Straight-in Rwy 36 NA at night, Circling Rwy 36 NA at night. Rwy 36 helicopter visibility reduction below 1 SM NA.

▲ MISSED APPROACH: Climb to 3000 direct UVOKY and hold.

AWOS-3P 124.05	GRISSEM APP CON ★ 123.85 291.675	UNICOM 122.8 (CTAF) 0
--------------------------	--	---------------------------------



ELEV 679	TDZE 673
----------	----------



MIRL Rwy 18-36
REIL Rwy 18 and 36

3000	UVOKY	VGS and descent angles not coincident (VGS Angle 4.00/TCH 25).		4 NM
		ZILIX	CIFAY	ALQAZ
		2.8 NM to RW36		Holding Pattern
		RW36		
		1600	2300	
		2.8 NM	2.2 NM	5.7 NM
CATEGORY	A	B	C	D
LNAV MDA	1040-1 367 (400-1)			
C CIRCLING	1200-1 521 (600-1)	1340-1 661 (700-1)	1500-2½ 821 (900-2½)	1500-2¾ 821 (900-2¾)

MONTICELLO, INDIANA
Amdt 1 10NOV16

40°43'N-86°46'W

RNAV (GPS) RWY 36

EC-2, 20 FEB 2025 to 20 MAR 2025

EC-2, 20 FEB 2025 to 20 MAR 2025