

WINCHESTER, INDIANA

AL-6189 (FAA)

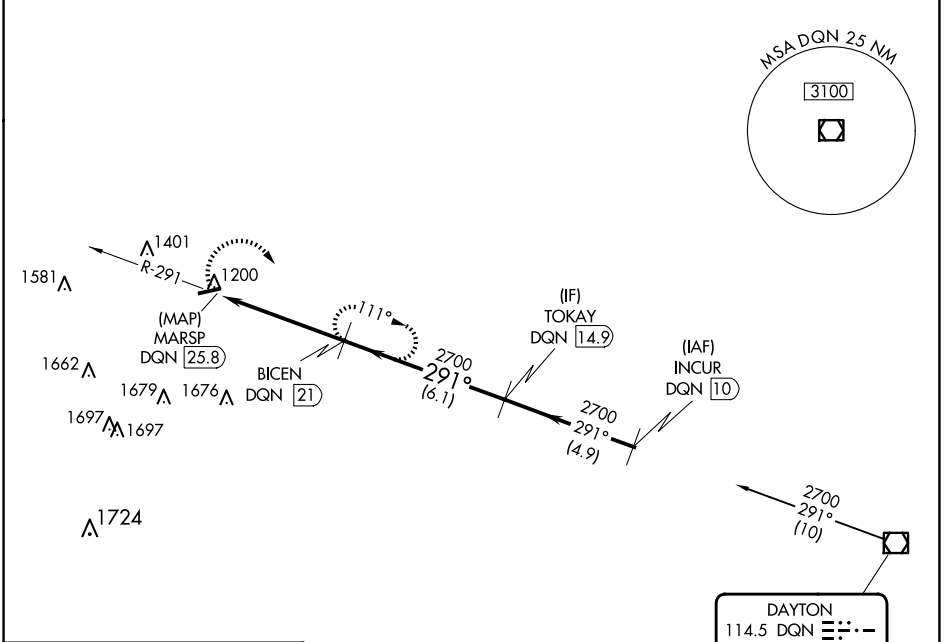
25051

VOR/DME DQN <b>114.5</b> Chan <b>92</b>	APP CRS <b>291°</b>	Rwy Idg TDZE Apt Elev <b>N/A</b> <b>N/A</b> <b>1123</b>
---	------------------------	--

**VOR-A**  
RANDOLPH COUNTY (I22)

DME required. ▼ ▲ NA	MISSED APPROACH: Climbing right turn to 2700 on DQN VOR/DME R-291 to BICEN/21 DME and hold.
----------------------------	--

VES AWOS-3PT <b>125.9</b>	COLUMBUS APP CON <b>134.45 352.05</b>	UNICOM <b>123.0</b> (CTAF) <b>1</b>
------------------------------	--	--

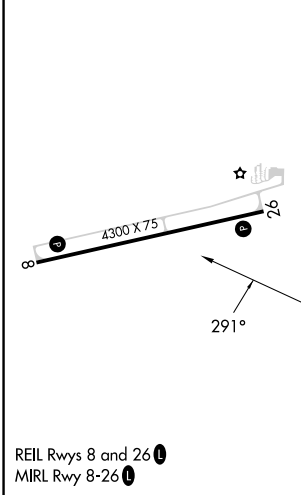


EC-2, 20 FEB 2025 to 20 MAR 2025

EC-2, 20 FEB 2025 to 20 MAR 2025

ELEV 1123

Procedure NA for arrival on DQN VOR/DME  
airway radials 234 CW 329.



	2700 DQN R-291	BICEN DQN [21]	BICEN DQN [21]	TOKAY DQN [14.9]
		MARS P DQN [25.8]	2700 291°	2700
		4.8 NM	6.1 NM	
CATEGORY	A	B	C	D
<b>C</b> CIRCLING	1700-1	577 (600-1)	1820-2 697 (700-2)	NA

WINCHESTER, INDIANA  
Amdt 10 13SEP18

40°10'N-84°56'W

RANDOLPH COUNTY (I22)  
**VOR-A**