

GARLAND FIVE DEPARTURE
(GARLS.TT) 25JAN24

DECATUR, TEXAS
DECATUR MUNI (LUD)

LONE STAR DEP CON
118.1 306.95
CTAF
122.8

**TOP ALTITUDE:
ASSIGNED BY ATC**

RADAR and DME required.

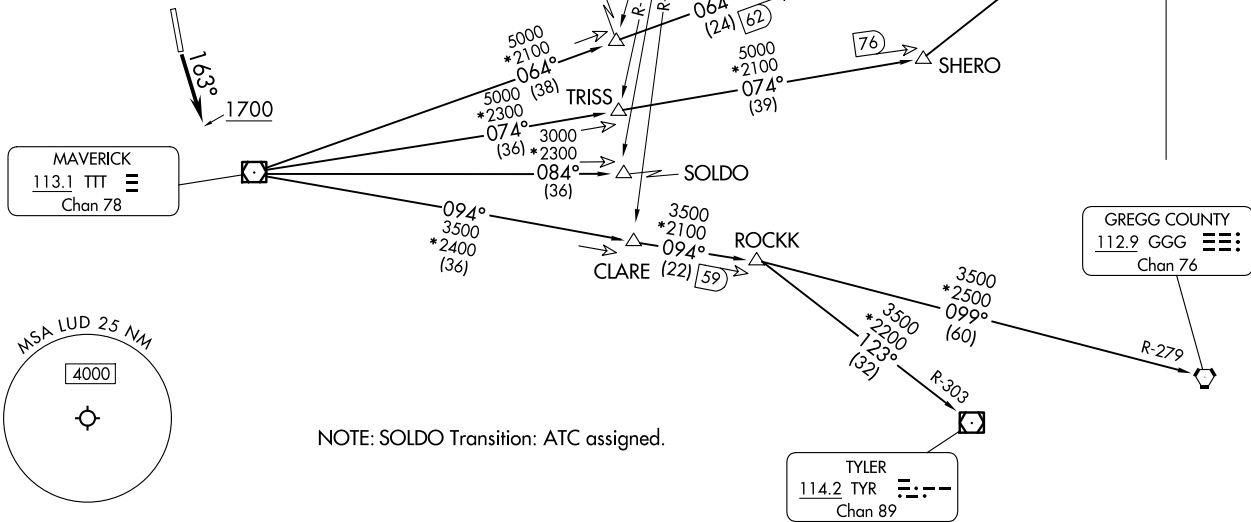
(GARLS.TT) 24305
GARLAND FIVE DEPARTURE

AL-6190 (FAA)

DECATUR MUNI (LUD)
DECATUR, TEXAS

TAKEOFF MINIMUMS

Rwy 17: Standard.
Rwy 35: Standard with minimum climb of 320'/NM to 3500.



NOTE: Chart not to scale.

(CONTINUED ON FOLLOWING PAGE)

GARLAND FIVE DEPARTURE



DEPARTURE ROUTE DESCRIPTION

TAKEOFF RUNWAY 17: Climb on heading 163° to 1700 before proceeding north.

When entering controlled airspace, fly assigned heading for RADAR vectors to appropriate route. Maintain ATC assigned altitude.

GREGG COUNTY TRANSITION (GARL5.GGG): From over TTT VOR/DME on TTT R-094 to ROCKK, then on GGG R-279 to GGG VORTAC.

PARIS TRANSITION (GARL5.PRX): From over TTT VOR/DME on TTT R-064 to ECKEY, then on PRX R-221 to PRX VOR/DME.

SOLDO TRANSITION (GARL5.SOLDO): From over TTT VOR/DME on TTT R-084 to SOLDO.

TEXARKANA TRANSITION (GARL5.TXK): From over TTT VOR/DME on TTT R-074 to SHERO, then on TXK R-244 to TXK VORTAC.

TYLER TRANSITION (GARL5.TYR): From over TTT VOR/DME on TTT R-094 to ROCKK, then on TYR R-303 to TYR VOR/DME.

SC-2, 20 FEB 2025 to 20 MAR 2025

SC-2, 20 FEB 2025 to 20 MAR 2025