

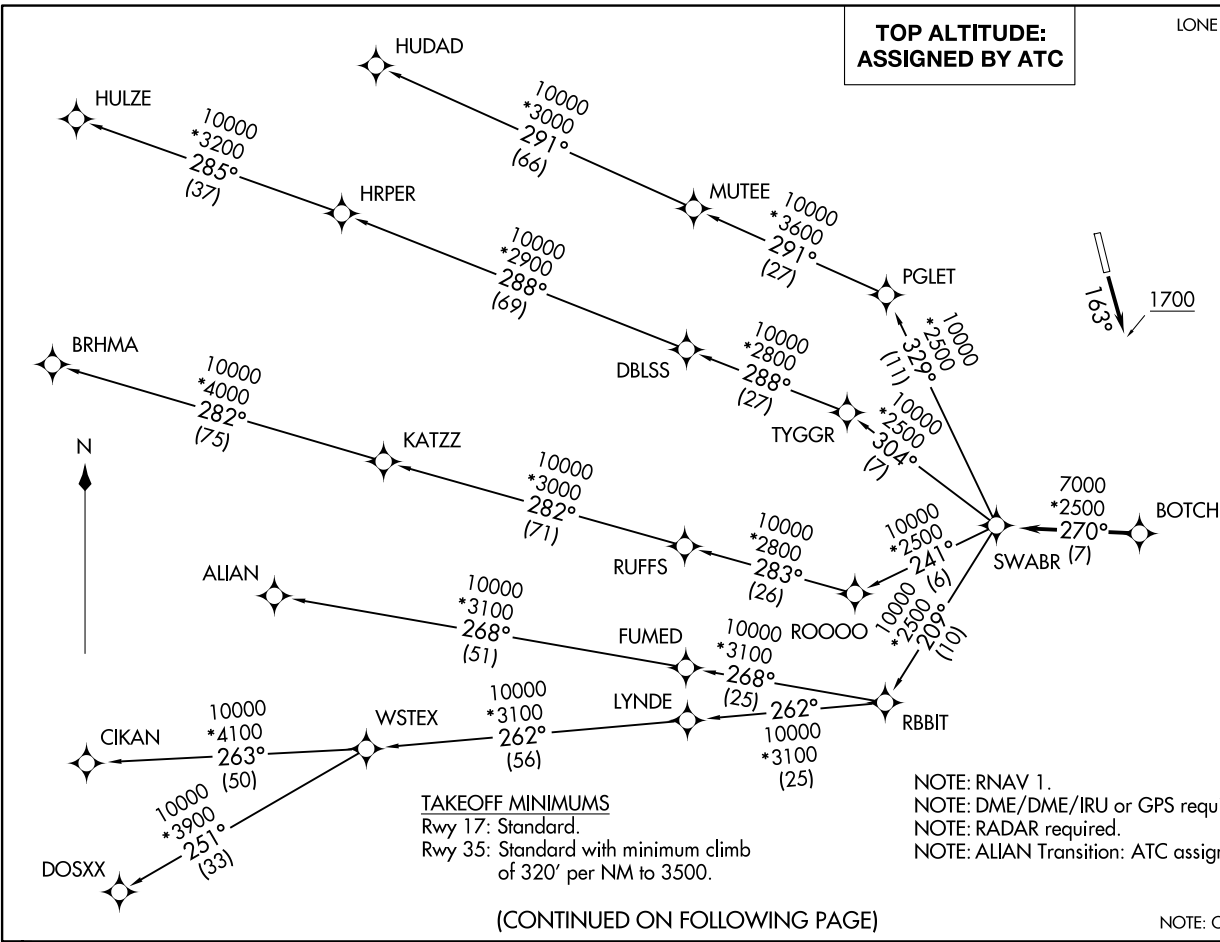
LONE STAR DEP CON
118.1 306.95
CTAF
122.8

**TOP ALTITUDE:
ASSIGNED BY ATC**

(SWABR1 .SWABR) 24305
SWABR ONE DEPARTURE (RNAV)

AL-6190 (FAA)

DECATUR MUNI (LTD)
DECATUR, TEXAS



TAKEOFF MINIMUMS

Rwy 17: Standard.
Rwy 35: Standard with minimum climb
of 320' per NM to 3500.

NOTE: RNAV 1.
NOTE: DME/DME/IRU or GPS required.
NOTE: RADAR required.
NOTE: ALIAN Transition: ATC assigned only.

(CONTINUED ON FOLLOWING PAGE)

NOTE: Chart not to scale.

SWABR ONE DEPARTURE (RNAV)
(SWABR1 .SWABR) 24MAR22

DECATUR, TEXAS
DECATUR MUNI (LTD)

SWABR ONE DEPARTURE (RNAV)



DEPARTURE ROUTE DESCRIPTION

TAKEOFF RUNWAY 17: Climb on heading 163° to 1700 before proceeding north.

When entering controlled airspace, fly heading assigned by ATC, expect vectors to BOTCH, then on track 270° to SWABR, then on assigned transition. Maintain ATC assigned altitude, expect filed altitude 10 minutes after departure.

- ALIAN TRANSITION (SWABR1.ALIAN)
- BRHMA TRANSITION (SWABR1.BRHMA)
- CIKAN TRANSITION (SWABR1.CIKAN)
- DOSXX TRANSITION (SWABR1.DOSXX)
- HUDAD TRANSITION (SWABR1.HUDAD)
- HULZE TRANSITION (SWABR1.HULZE)
- WSTEX TRANSITION (SWABR1.WSTEX)

SC-2, 20 FEB 2025 to 20 MAR 2025

SC-2, 20 FEB 2025 to 20 MAR 2025