

VORTAC UKW <b>117.15</b> Chan 118 (Y)	APP CRS <b>137°</b>	Rwy Idg TDZE Apt Elev	<b>4200</b> <b>1047</b> <b>1047</b>
---	------------------------	-----------------------------	---

# VOR/DME RWY 17

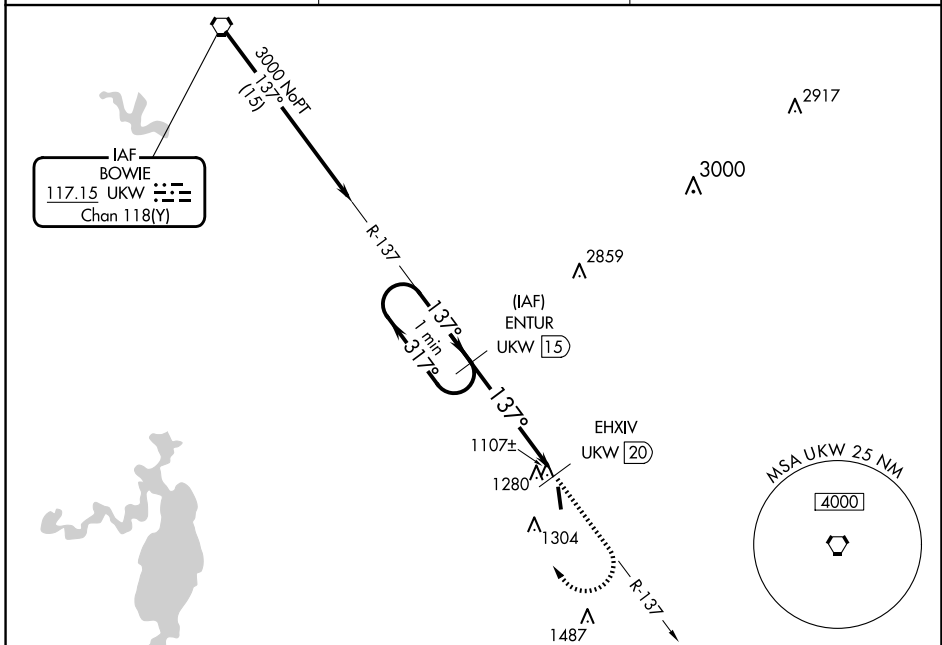
DECATUR MUNI (LUD)

**▼** When local altimeter setting not received, use Fort Worth  
**▲ NA** Meacham Intl altimeter setting. MISSED APPROACH: Climb to 2400 then climbing right turn to 3100 via UKW R-137 to ENTUR/1.5 DME and hold.

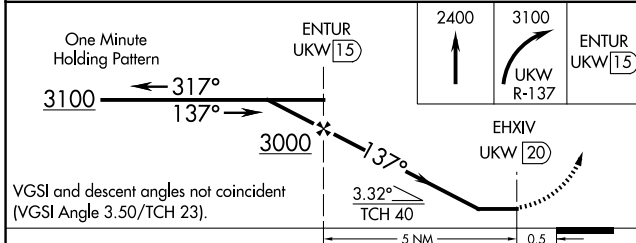
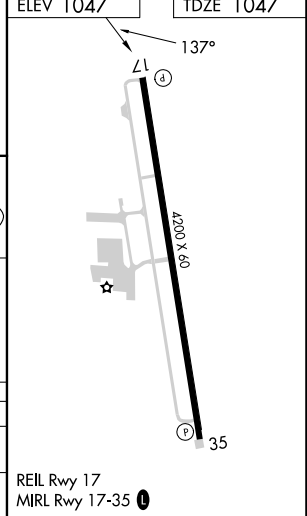
AWOS-3  
**118.225**

LONE STAR APP CON  
**118.1 306.95**

UNICOM  
**122.8(CTAF) 0**



ELEV 1047	TDZE 1047
-----------	-----------



CATEGORY	A	B	C	D
S-17	1700-1 653 (700-1)	1700-1¼ 653 (700-1¼)		NA
<b>C</b> CIRCLING	1800-1 753 (800-1)	1800-1¼ 753 (800-1¼)		NA

REIL Rwy 17  
MIRL Rwy 17-35 **0**

SC-2, 20 FEB 2025 to 20 MAR 2025

SC-2, 20 FEB 2025 to 20 MAR 2025