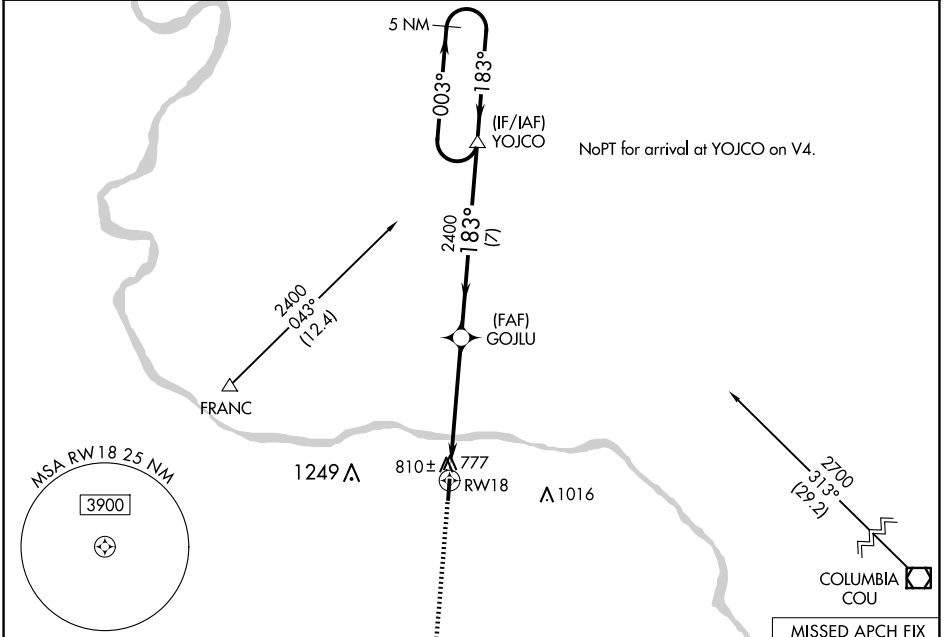


| | | | |
|--|------------------------|---|---|
| WAAS CH 72703 W18A | APP CRS 183° | Rwy Idg TDZE 715 Apt Elev 715 | 4000 715 715 |
|--|------------------------|---|---|

RNAV (GPS) RWY 18

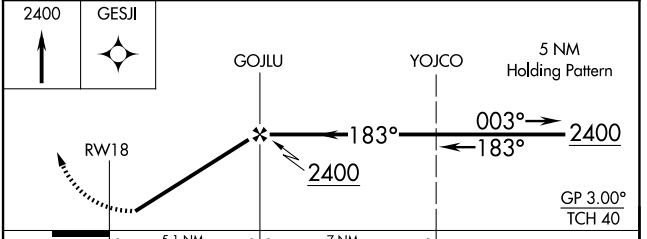
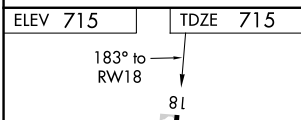
JESSE VIERTEL MEML (V.E.R.)

| | | |
|---|---------------------------------|--|
| RNP APCH. | | MISSED APPROACH: Climb to 2400 direct GESJ and hold. |
| <p>▼ NA Circling Rwy 36 NA at night. Rwy 18 helicopter visibility reduction below ¼ SM NA. Use Columbia Rgnl altimeter setting.</p> | | |
| AWOS-3PT 119.625 | MIZZU APP CON 124.375 | UNICOM 122.7 (CTAF) ① |



NC-3, 20 FEB 2025 to 20 MAR 2025

NC-3, 20 FEB 2025 to 20 MAR 2025



| CATEGORY | A | B | C | D |
|----------|----------------------|--------------------|----------------------|----|
| LPV DA | 1103-1½ 388 (400-1½) | | | NA |
| LNAV MDA | 1140-1 | 425 (500-1) | 1140-1¼ 425 (500-1¼) | NA |
| CIRCLING | 1260-1 545 (600-1) | 1340-1 625 (700-1) | 1420-2 705 (800-2) | NA |

REIL Rwy 18 and 36 **①**
MIRL Rwy 18-36 **①**