

WAAS CH <b>62834</b> <b>W09A</b>	APP CRS <b>092°</b>	Rwy Idg TDZE Apt Elev	<b>5000</b> <b>856</b> <b>861</b>
--	------------------------	-----------------------------	---

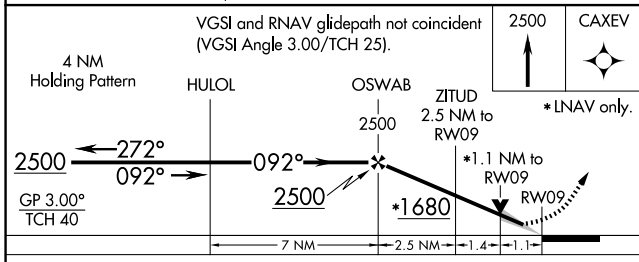
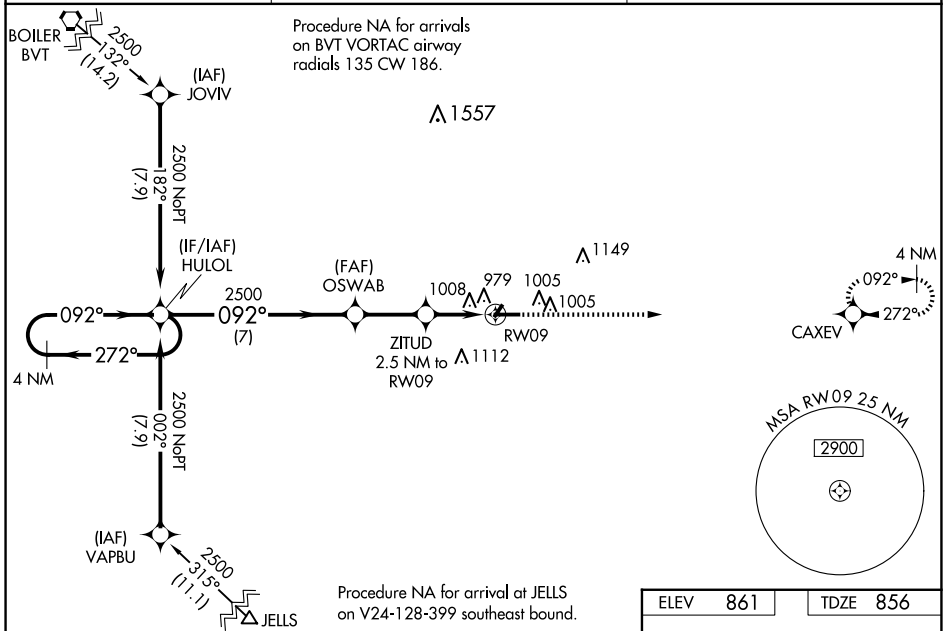
# RNAV (GPS) RWY 9

FRANKFORT CLINTON COUNTY RGNL (F'K'R)

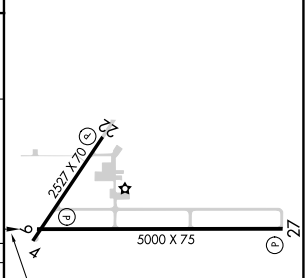
Baro-VNAV NA when using Indianapolis Exec altimeter setting. For uncompensated Baro-VNAV systems, LNAV/VNAV NA below -16°C (4°F) or above 54°C (130°F). DME/DME RNP-0.3 NA. VDP NA with Indianapolis Exec altimeter setting. When local altimeter setting not received, use Indianapolis Exec altimeter setting; increase LPV DA to 1162 feet and visibility 1/8 SM all Cats; increase LNAV/VNAV DA to 1245 feet and visibility 1/8 SM all Cats; increase all MDAs 60 feet and LNAV and Circling Cats C/D visibilities 1/4 SM.

**MISSED APPROACH:**  
Climb to 2500 direct CAXEV and hold.

AWOS-3 <b>124.325</b>	GRISSOM APP CON* <b>123.85 291.675</b>	UNICOM <b>123.0 (CTAF) 0</b>
--------------------------	---	---------------------------------



ELEV 861	TDZE 856
----------	----------



CATEGORY	A	B	C	D
LPV DA		1106-7/8	250 (300-7/8)	
LNAV/VNAV DA		1189-1	333 (400-1)	
LNAV MDA	1260-1	404 (400-1)	1260-1 1/8	404 (400-1 1/8)
<b>C</b> CIRCLING	1460-1	599 (600-1)	1520-1 3/4 659 (700-1 3/4)	1520-2 659 (700-2)

MIRL Rwy 4-22 and 9-27 0  
REIL Rwy 9 and 27 0

EC-2, 20 FEB 2025 to 20 MAR 2025

EC-2, 20 FEB 2025 to 20 MAR 2025