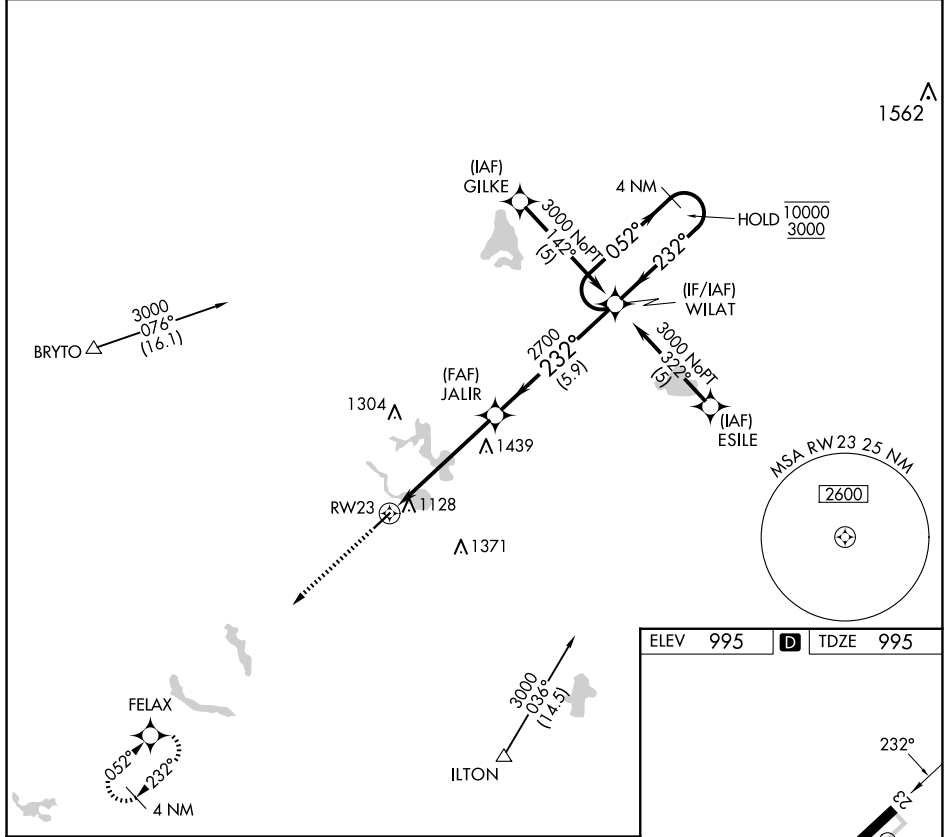


APP CRS	Rwy Idg	4000
232°	TDZE	995
	Apt Elev	995

RNAV (GPS) RWY 23

TRI-STATE STEUBEN COUNTY (A.N.Q)

RNP APCH.		MISSED APPROACH: Climb to 3000 direct FELAX and hold.
Rwy 23 helicopter visibility reduction below 1 SM NA. Procedure NA at night.		
AWOS-3 118.175	FORT WAYNE APP CON 127.2 284.6 (SW/NW) 132.15 284.6 (SE/NE)	UNICOM 123.075 (CTAF)



EC-2, 20 FEB 2025 to 20 MAR 2025

EC-2, 20 FEB 2025 to 20 MAR 2025

ELEV	995		TDZE	995
------	-----	--	------	-----

REIL Rwy 5 and 23

MIRL Rwy 5-23

CATEGORY	Visual Segment - Obstacles.		4 NM Holding Pattern	
	A	B	C	D
LNVA MDA	1700-1	705 (800-1)	1700-2	NA
	705 (800-1)		705 (800-2)	