

APP CRS	Rwy Idg	4000
052°	TDZE	990
	Apt Elev	995

RNAV (GPS) RWY 5

TRI-STATE STEUBEN COUNTY (ANQ)

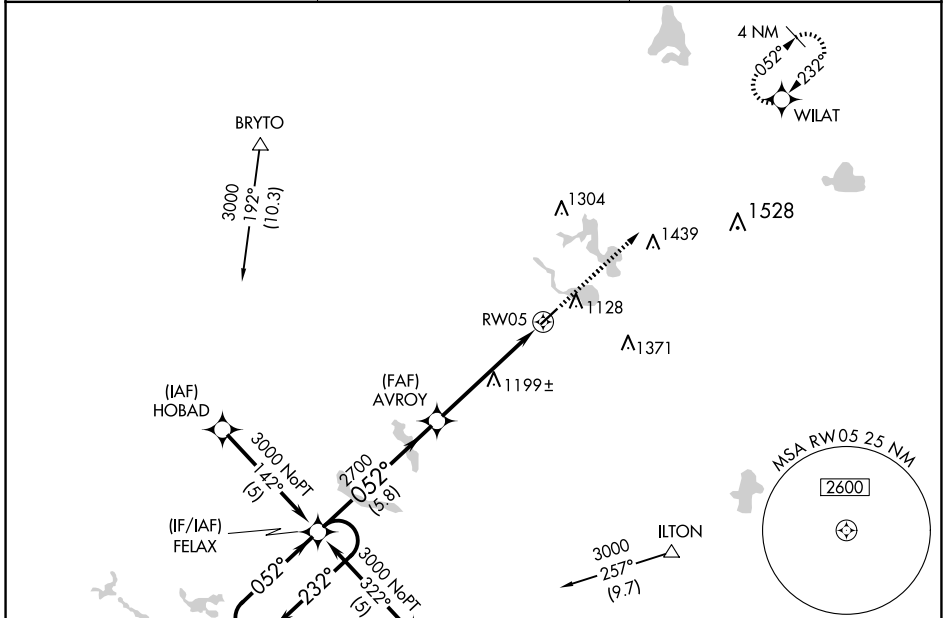
RNP APCH.

▼ For uncompensated Baro-VNAV systems, LNAV/VNAV NA below -16°C or above 54°C.

▲ NA Rwy 5 helicopter visibility reduction below 3/4 SM NA.

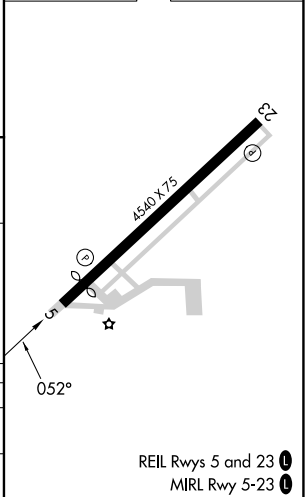
MISSED APPROACH:
Climb to 3000 direct
WILAT and hold.

AWOS-3 118.175	FORT WAYNE APP CON 127.2 284.6 (SW/NW) 132.15 284.6 (SE/NE)	UNICOM 123.075 (CTAF) 1
--------------------------	---	-----------------------------------



ELEV 995 **D** TDZE 990

4 NM Holding Pattern FELAX	3000	232°	052°	2700	052°	3000	WILAT
	GP 3.00° TCH 40					*1.4 NM to RWY05	*LNAV only
		5.8 NM		3.8 NM		1.4	
CATEGORY	A	B	C	D			
LNAV/VNAV DA	1474-1 3/4		484 (500-1 3/4)	NA			
LNAV MDA	1460-1	470 (500-1)	1460-1 1/2 470 (500-1 1/2)	NA			



REIL Rws 5 and 23 **1**
MIRL Rwy 5-23 **1**

EC-2, 20 FEB 2025 to 20 MAR 2025

EC-2, 20 FEB 2025 to 20 MAR 2025