

WAAS CH 58121 W28A	APP CRS 277°	Rwy ldg TDZE Apt Elev	5179 497 501
--	------------------------	-----------------------------	---

RNAV (GPS) RWY 28

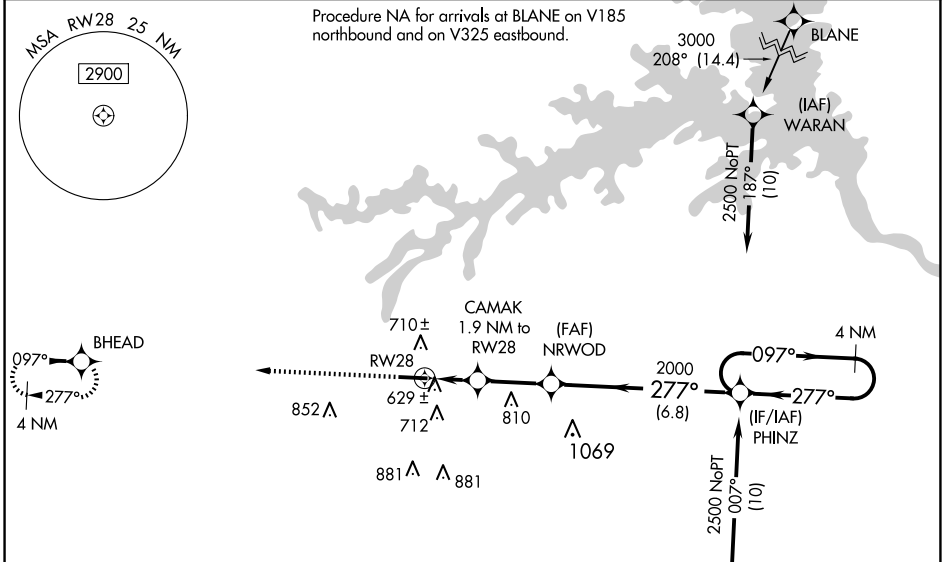
THOMSON/McDUFFIE COUNTY (HQJ)

RNP APCH

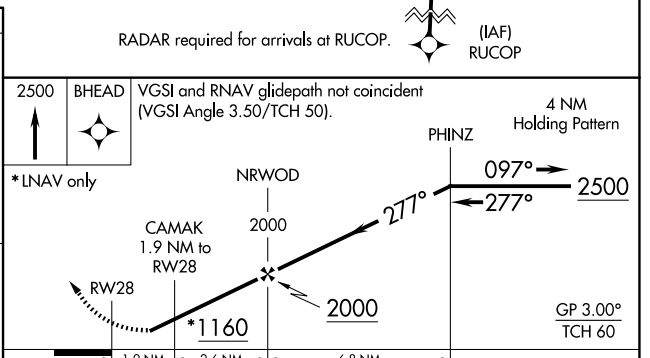
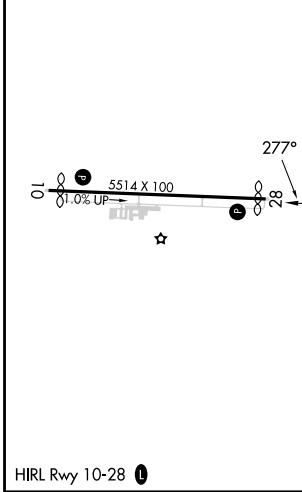
▼ Baro-VNAV NA when using Daniel Field altimeter setting. For uncompensated Baro-VNAV systems, LNAV/VNAV NA below -15°C (5°F) or above 54°C (130°F).
 ▲ When local altimeter setting not received, use Daniel Field altimeter setting: increase LPV DA to 854 feet and visibility Cats A/B ½ SM, increase LNAV/VNAV DA to 877 feet; increase all MDAs 80 feet and increase visibility LNAV Cats C/D and Circling Cat C ¼ SM, and Circling Cat D ½ SM. Rwy 28 helicopter visibility reduction below ¾ SM NA.

MISSED APPROACH: Climb to 2500 direct BHEAD and hold.

AWOS-3 120.625	AUGUSTA APP CON * 124.45 270.3	UNICOM 122.8 (CTAF) 0
--------------------------	--	---------------------------------



ELEV 501	D	TDZE 497
----------	----------	----------



	A	B	C	D
CATEGORY	A	B	C	D
LPV DA	787-7/8	290 (300-7/8)	787-1	290 (300-1)
LNAV/VNAV DA	810-1 313 (400-1)			
LNAV MDA	880-1	383 (400-1)	880-1 1/8	383 (400-1 1/8)
CIRCLING	1060-1 559 (600-1)	1080-1 579 (600-1)	1200-2 699 (700-2)	1240-2 1/4 739 (800-2 1/4)

SE-4, 20 FEB 2025 to 20 MAR 2025

SE-4, 20 FEB 2025 to 20 MAR 2025