

APP CRS	Rwy Idg	<b>3280</b>
<b>134°</b>	TDZE	<b>1161</b>
	Apt Elev	<b>1174</b>

# RNAV (GPS) RWY 13

HARRISON COUNTY (8G6)

RNP APCH.

**▽** Rwy 13 helicopter visibility reduction below 1 SM NA. Use Wheeling altimeter setting; when not received, use Washington altimeter setting and increase all MDA 40 feet. Procedure NA at night.

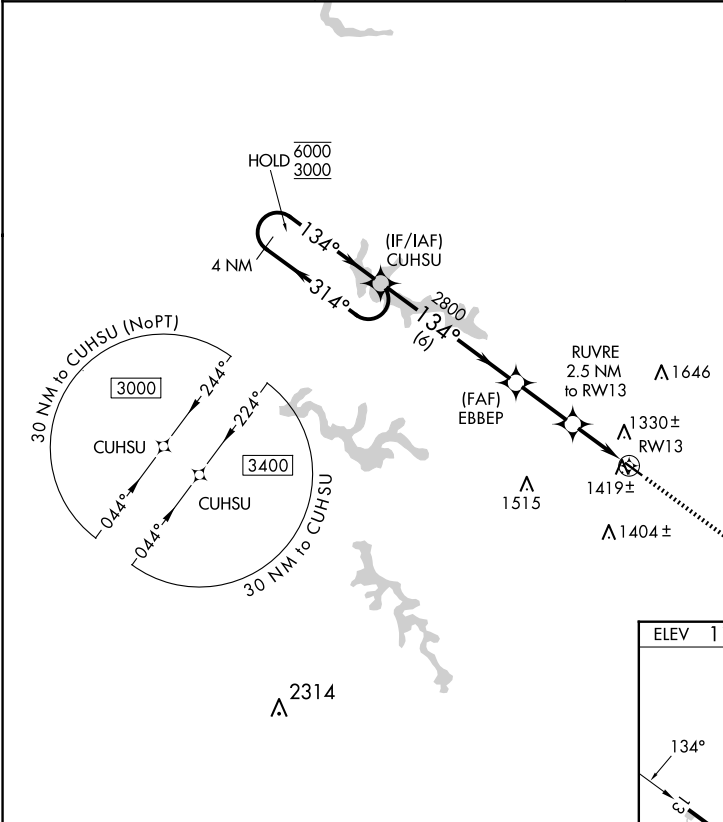
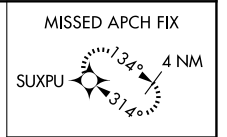
**▲** NA

MISSED APPROACH: Climb to 3100 direct SUXPU and hold.

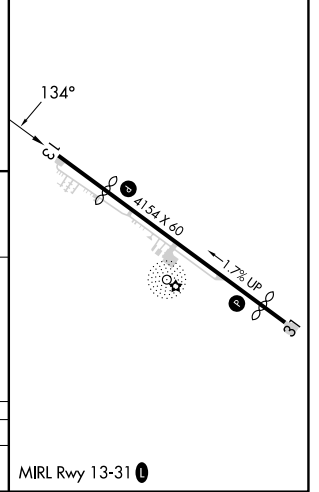
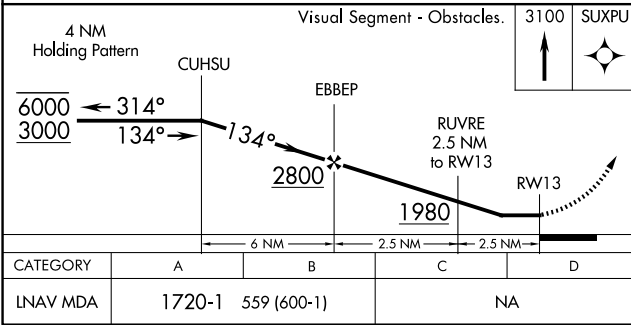
HLG ASOS  
**127.375**

CLEVELAND CENTER  
**126.95 239.30**

UNICOM  
**122.8 (CTAF) 0**



ELEV 1174	TDZE 1161
-----------	-----------



CATEGORY	A	B	C	D
LNAV MDA	1720-1	559 (600-1)	NA	

EC-2, 20 FEB 2025 to 20 MAR 2025

EC-2, 20 FEB 2025 to 20 MAR 2025