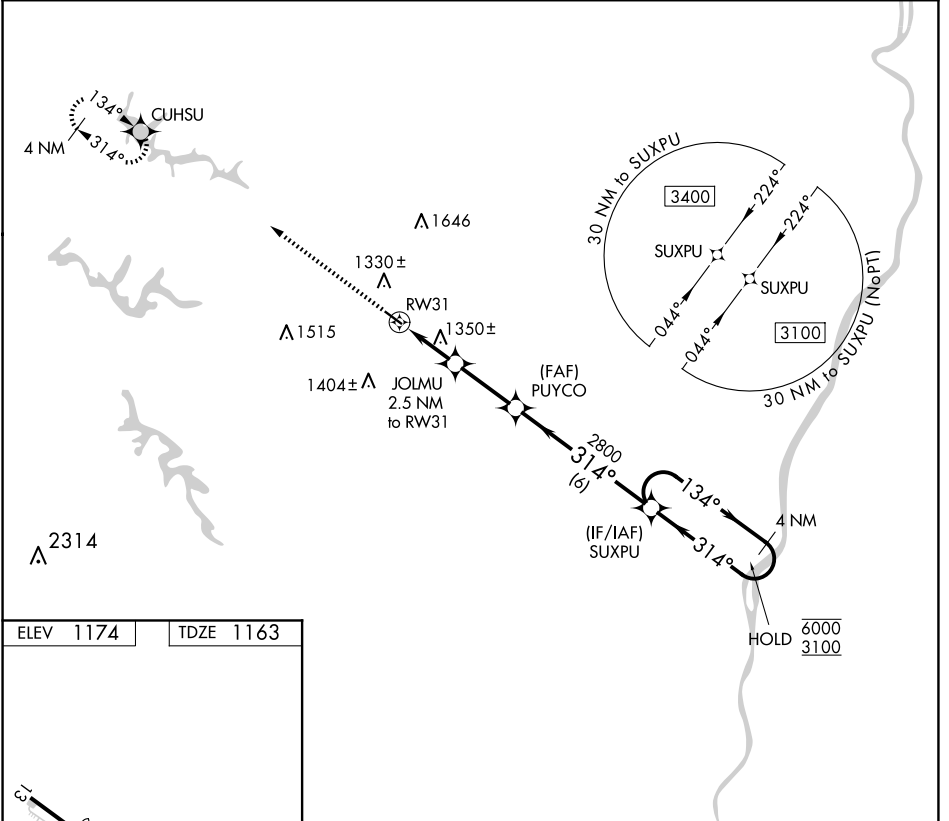


APP CRS	Rwy Idg	<b>3744</b>
<b>314°</b>	TDZE	<b>1163</b>
	Apt Elev	<b>1174</b>

# RNAV (GPS) RWY 31

HARRISON COUNTY (8G6)

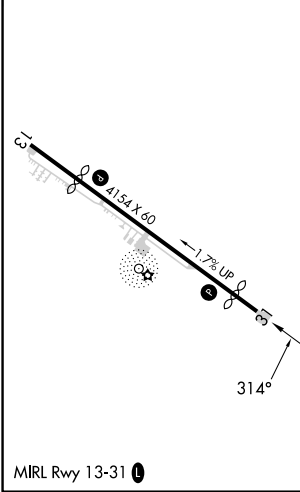
RNP APCH.		MISSED APPROACH: Climb to 3000 direct CUHSU and hold.
▼	Rwy 31 helicopter visibility reduction below 1 SM NA. Use Wheeling altimeter setting; when not received, use Washington altimeter setting and increase all MDA 40 feet. Procedure NA at night.	
HLG ASOS	CLEVELAND CENTER	UNICOM
<b>127.375</b>	<b>126.95 239.30</b>	<b>122.8 (CTAF) 0</b>



EC-2, 20 FEB 2025 to 20 MAR 2025

EC-2, 20 FEB 2025 to 20 MAR 2025

ELEV 1174	TDZE 1163
-----------	-----------



3000	CUHSU	Visual Segment - Obstacles.	4 NM Holding Pattern
		JOLMU 2.5 NM to RW31	SUXPU
		1940	2800
		2.5 NM	2.7 NM
		6 NM	
CATEGORY	A	B	C
LNAV MDA	1660-1	497 (500-1)	NA