

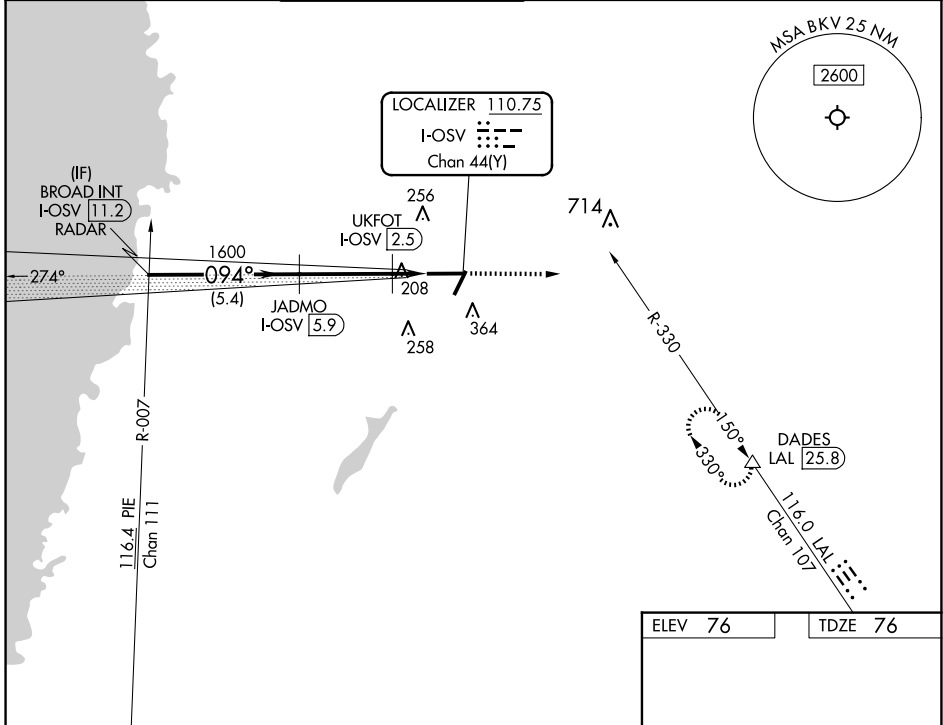
LOC/DME I-OSV <b>110.75</b> Chan <b>44</b> (Y)	APP CRS <b>094°</b>	Rwy Idg <b>7001</b> TDZE <b>76</b> Apt Elev <b>76</b>
--	------------------------	---

# ILS or LOC RWY 9

BROOKSVILLE-TAMPA BAY RGNL (BKV)

RADAR required for procedure entry. DME required.		MALSR 	MISSED APPROACH: Climb to 3000 on heading 090° and LAL VORTAC R-330 to DADES/LAL VORTAC 25.8 DME and hold.

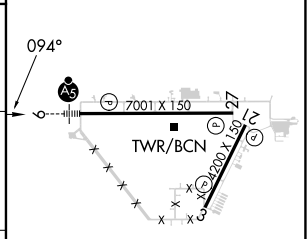
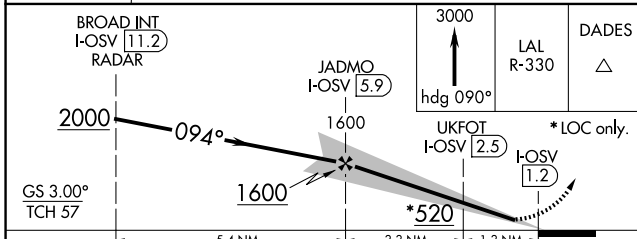
ASOS <b>134.725</b>	TAMPA APP CON <b>125.3 316.05</b>	BROOKSVILLE TOWER ★ <b>118.55</b> (CTAF)	GND CON <b>121.4</b>	CLNC DEL <b>119.125</b> (When twr closed)	UNICOM <b>123.0</b>
------------------------	--------------------------------------	---	-------------------------	---	------------------------



SE-3, 20 FEB 2025 to 20 MAR 2025

SE-3, 20 FEB 2025 to 20 MAR 2025

ELEV 76	TDZE 76
---------	---------



CATEGORY	A	B	C	D
S-ILS 9	276-1/2 200 (200-1/2)			
S-LOC 9	460-1/2	384 (400-1/2)	460-5/8	384 (400-5/8)
CIRCLING	680-1	604 (700-1)	680-1 3/4 604 (700-1 3/4)	760-2 1/4 684 (700-2 1/4)

MIRL Rwy 3-21 and 9-27